



Inner North East Community Committee

Chapel Allerton, Moortown, Roundhay

Meeting to be held remotely on
Monday, 1st March, 2021 at 6.00 pm

Councillors:

- | | |
|---------------|--------------------|
| J Dowson | - Chapel Allerton; |
| M Rafique | - Chapel Allerton; |
| E Taylor | - Chapel Allerton; |
| R Charlwood | - Moortown; |
| S Hamilton | - Moortown; |
| M Shahzad | - Moortown; |
| J Goddard | - Roundhay; |
| E Tunnicliffe | - Roundhay; |
| A Wenham | - Roundhay; |

Note to observers of the meeting: To remotely observe this meeting, please click on the 'View the Meeting Recording' link which will feature on the meeting's webpage (linked below) ahead of the meeting. The webcast will become available at the commencement of the meeting.

<https://democracy.leeds.gov.uk/ieListDocuments.aspx?CId=1000&MeetingId=10246>





Agenda compiled by: Natasha Prosser 0113 3788021
Governance Services Unit, Civic Hall, Leeds LS1 1UR

Head of Stronger Communities: Liz Jarmin Tel: 0113 3789035

*Images on cover from left to right:
Chapel Allerton - Chapeltown Big C; Chapel Allerton tree
Moortown - Moortown Corner Shops; Gledhow Valley Woods
Roundhay – Oakwood Clock; Roundhay Park*

A G E N D A

Item No	Ward/Equal Opportunities	Item Not Open		Page No
1			<p>APPEALS AGAINST REFUSAL OF INSPECTION OF DOCUMENTS</p> <p>To consider any appeals in accordance with Procedure Rule 15.2 of the Access to Information Procedure Rules (in the event of an Appeal the press and public will be excluded).</p> <p>(*In accordance with Procedure Rule 15.2, written notice of an appeal must be received by the Head of Governance Services at least 24 hours before the meeting).</p>	
2			<p>EXEMPT INFORMATION - POSSIBLE EXCLUSION OF THE PRESS AND PUBLIC</p> <p>1 To highlight reports or appendices which officers have identified as containing exempt information, and where officers consider that the public interest in maintaining the exemption outweighs the public interest in disclosing the information, for the reasons outlined in the report.</p> <p>2 To consider whether or not to accept the officers recommendation in respect of the above information.</p> <p>3 If so, to formally pass the following resolution:- RESOLVED – That the press and public be excluded from the meeting during consideration of the following parts of the agenda designated as containing exempt information on the grounds that it is likely, in view of the nature of the business to be transacted or the nature of the proceedings, that if members of the press and public were present there would be disclosure to them of exempt information, as follows:-</p>	
3			<p>LATE ITEMS</p> <p>To identify items which have been admitted to the agenda by the Chair for consideration</p> <p>(The special circumstances shall be specified in the minutes)</p>	

Item No	Ward/Equal Opportunities	Item Not Open		Page No
4			<p>DECLARATIONS OF DISCLOSABLE PECUNIARY INTERESTS</p> <p>To disclose or draw attention to any disclosable pecuniary interests for the purposes of Section 31 of the Localism Act 2011 and paragraphs 13-18 of the Members' Code of Conduct</p>	
5			<p>APOLOGIES FOR ABSENCE</p> <p>To receive any apologies for absence</p>	
6			<p>OPEN FORUM</p> <p>In order to facilitate the Open Forum item whilst Community Committee meetings are being held remotely, the process has adapted slightly, so that members of the public are invited to make written submissions in advance of the meeting on any matter which falls within the Community Committee's terms of reference. These will be read out by the Clerk under this agenda item and considered by the Community Committee.</p>	
7			<p>MINUTES OF THE PREVIOUS MEETING - 2 DECEMBER 2020</p> <p>To confirm as a correct record the minutes of the previous meeting held Wednesday 2nd December 2020.</p>	7 - 14
8			<p>COVID19 VACCINATION PROGRAMME UPDATE</p> <p>To receive a verbal update on the work the NHS are undertaking in relation to the nationwide Covid19 vaccination programme in response to ongoing need in communities as the Covid-19 Pandemic has continued.</p> <p>(Cover report attached)</p>	15 - 16

Item No	Ward/Equal Opportunities	Item Not Open		Page No
9			<p data-bbox="676 181 1406 215">CONNECTING LEEDS TRANSPORT STRATEGY</p> <p data-bbox="676 255 1337 398">The report of the Director of City Development brings to members' attention details of the consultation on the draft Connecting Leeds Transport Strategy.</p> <p data-bbox="676 439 1358 510">(Report and executive summary for the strategy attached)</p>	17 - 28
10			<p data-bbox="676 577 1406 649">INNER NORTH EAST COMMUNITY COMMITTEE FINANCE REPORT</p> <p data-bbox="676 689 1406 869">The report of the Head of Stronger Communities provides the Community Committee with an update on the budget position for the Wellbeing Fund, Youth Activity Fund, Capital Budget, as well as Community Infrastructure Levy Budget for 2020/21.</p> <p data-bbox="676 909 927 943">(Report attached)</p>	29 - 42
11			<p data-bbox="676 1014 1406 1086">INNER NORTH EAST COMMUNITY COMMITTEE UPDATE REPORT</p> <p data-bbox="676 1126 1406 1373">The report of the Head of Stronger Communities brings to members' attention an update of the work which the Communities Team is engaged in, based on priorities identified by the Community Committee. It also provides opportunities for further questioning, or to request a more detailed report on a particular issue.</p> <p data-bbox="676 1413 927 1447">(Report attached)</p>	43 - 60
12			<p data-bbox="676 1525 1209 1597">DATE AND TIMES OF COMMUNITY COMMITTEE MEETINGS 2021/22</p> <p data-bbox="676 1637 1374 1771">The report of the City Solicitor requests Members to give consideration to agreeing the proposed Community Committee meeting schedule for the 2021/22 municipal year.</p> <p data-bbox="676 1812 927 1845">(Report attached)</p>	61 - 64

Item No	Ward/Equal Opportunities	Item Not Open		Page No
			<p><u>Third Party Recording</u></p> <p>Recording of this meeting is allowed to enable those not present to see or hear the proceedings either as they take place (or later) and to enable the reporting of those proceedings. A copy of the recording protocol is available from the contacts named on the front of this agenda.</p> <p>Use of Recordings by Third Parties – code of practice</p> <ul style="list-style-type: none"> a) Any published recording should be accompanied by a statement of when and where the recording was made, the context of the discussion that took place, and a clear identification of the main speakers and their role or title. b) Those making recordings must not edit the recording in a way that could lead to misinterpretation or misrepresentation of the proceedings or comments made by attendees. In particular there should be no internal editing of published extracts; recordings may start at any point and end at any point but the material between those points must be complete. 	

INNER NORTH EAST COMMUNITY COMMITTEE

WEDNESDAY, 2ND DECEMBER, 2020

PRESENT: Councillor M Shahzad in the Chair

Councillors J Dowson, J Goddard,
S Hamilton, M Rafique and A Wenham

CHAIRS OPENING COMMENTS

The Chair welcomed everyone to the remote meeting of the Inner North East Community Committee.

The Chair explained that internet connectivity may be an issue for some participants, and that Councillor Dowson as Vice Chair would assume the Chair should the Chair lose connectivity. The Committee agreed with this approach.

59 Appeals Against Refusal of Inspection of Documents

There were no appeals against refusal of inspection of documents.

60 Exempt Information - Possible Exclusion of the Press and Public

There were no exempt items.

61 Late Items

There were no formal late items. However, following the meeting, supplementary information had been published in terms of Agenda Item 9 – Finance Report. (Minute no. 67 refers)

62 Declarations of Disclosable Pecuniary Interests

There were no declarations of disclosable pecuniary interests.

63 Apologies for Absence

Apologies were received from R Charlwood, Councillor E Taylor and E Tunnicliffe.

64 Open Forum

On this occasion, no written submissions had been received from members of the public.

Draft minutes to be approved at the meeting
to be held on Monday, 1st March, 2021

65 Minutes of the previous meeting - 2 March 2020

RESOLVED – That the minutes of the previous meeting held 2 March 2020 be approved as an accurate record.

66 Response to Covid-19 Update

The Chair invited representatives on behalf of the Volunteer Hubs (North East area) to provide an update on the work undertaken, in response to the ongoing need in communities as the Covid-19 Pandemic has continued.

The following had been highlighted:

Vanessa Brown, InterACT

- The service formed a partnership with the churches and community, to meet different needs, whilst battling prejudice and inequalities;
- Community development work has continued throughout the pandemic and new referrals have been picked up, whilst continuing to support local families;
- Work has also been undertaken in conjunction with Moortown Baptist Church;
- There had been 300 new referrals (people coming into the helpline who weren't repeat referrals);
- Shopping for residents was the main theme of services provided during the pandemic, as a result of this food parcels are now being provided;
- Over 300 volunteers initially signed up, and the hub has worked with as many of those as possible – the service are encouraged to build on and to remain in contact with all volunteers.

Corrina Lawrence, Feel Good Factor

- The feedback from service users has been positive;
- Local expertise has enabled the hub to sign post people to activities they wouldn't know about;
- The 'Better Together' service, aimed to reduced inequalities in North East Leeds;
- The hub devised their own system to provide a seamless service, and to pass information and outstanding requests on to various partners;
- Be-friending services and the delivery of emergency food parcels had continued throughout the pandemic. Additionally, a be-friending service had also been developed outside of work;
- It was acknowledged that whilst referrals had dropped, additional support was needed in terms of unemployment over the coming months.

Darren De Souza, Touchstone

- The daily food requests and support across Leeds;
- An update on 'Touchstone Loves Food' – on 25 March 2020, the first food parcels had been distributed. The service engaged with 85

volunteers across the city, with 30 of those people being food recipients themselves;

- In North East Leeds it was confirmed that the service provided 37,000 meals across Chapel Allerton, over 1,000 in Moortown and over 2,300 in Roundhay since March 2020. In total, 167,000 meals were provided across Leeds;
- Providing support to families has been a big theme in how the service provides support;
- Touchstone form part of a contract with Mentally Healthy Leeds, and have dealt with 7,000 phone calls, and 300 intensive mental health support calls as part of that work;
- Funding has been secured to continue operating until November 2021.

In responding to questions from Members, the following had been discussed:

- Clarity on whether there had been an increase in demand on services in the second phase of lockdown – it was confirmed that whilst food deliveries were still be a requirement due to increased unemployment, the service has been looking at ways to help people support themselves. Additional funding has been obtained in order to better support families, and digital exclusion. Additionally, it was identified that more support was required long-term surrounding mental health and poverty issues;
- Clarity on the number of meals delivered – 40,000 meals had been provided in the committee area since March 2020, and each delivery would aim to provide 21 meals per individual in a week. The packages included fresh & ambient food, milk & bread and a range of health care products
- Food provision for ethnic minority backgrounds – it was confirmed that cultural requirements are provided, and additionally, warm food has been provided for recipients unable to cook.

The Committee shared their thanks for the work undertaken on behalf of all of the organisations and volunteers.

The Chair invited Denise O' Connor (Census Engagement Manager, North East Leeds) and Jason Zawadzki (Deputy Director, Census Collection) to provide the Committee with an update on Census 2021.

The Deputy Director of Census Collection briefly informed Members of his role in running Census across England and Wales and reinforced the importance of Census for businesses and community groups across communities in terms of planning for the future.

The Census Engagement Manager provided the Inner North East Community Committee with a presentation, highlighting the following:

- Key messages around security and keeping information safe and secure – it was noted that personal information remains anonymous for 100 years;
- The information obtained helps to shape government policy, and monitor equality. Additionally the information further helps inform

decisions that change lives, in terms of future care planning, local housing needs and the education sector;

- Census will take place Sunday 21st March 2021, and it was confirmed that additional help would be offered in terms of accessibility and language barriers;
- A mass marketing campaign would commence in the New Year, with every household receiving information on how to participate;
- Councillors involvement in social media / verbal communications and sharing key contact details;
- The recruitment process of local people in order to overcome barriers such as language and digital exclusion.

In responding to questions from Members, the following had been discussed:

- The importance of gaining trust of residents through local and national campaigns and identifying local community leaders to help influence and break down barriers across communities;
- The contingency plans in place in terms of event planning and the digital support provided to people in terms of Covid-19 restrictions. Members heard the work provided by the service in offering support across communities had already changed, and additional measures would be implemented for safeguarded areas;
- 35k people from across England and Wales would be recruited. It was confirmed that the process has commenced on social media, with the campaign running in December and recruitments through January 2021.

The Chair thanked all for their participation.

RESOLVED – To note the verbal updates

67 Inner North East Community Committee - Finance Report

The report of the Head of Stronger Communities provided the Community Committee with an update on the budget position for the Wellbeing Fund, Youth Activity Fund, Capital Budget, as well as the Community Infrastructure Levy Budget for 2020/21.

Members were in receipt of, and referred to a revised Finance Report that corrected figures in the original report. This revised version was published as supplementary information following the meeting.

Members were informed of the following points:

- Paragraphs 17 – 19 provided an update on the Wellbeing Fund. A full breakdown of the projects was provided at Table 1. The total revenue funding available to the Community Committee for 2020/21 is £136,177.81;
- The total spend for Area wide ring fenced projects amounted to £97,978.67. The Remaining Available Balance for Area wide ward projects was £25,228.04;

- Members were requested to consider applications in relation to Nubian Noire, Moortown Park (Environmental Improvements) and Moortown Ward Grit Bin Refills. Members were in agreement to approve these applications;
- Since the last Consultative Meeting on 7th September 2020, the following projects had been approved by DDN:
 - Fresh Leeds Community Radio C.I.C
 - RadhaRaman Society in partnership with Sauda
 - Roundhay and Potternewton Beginners Cycle Sessions
 - RJC Dance Camps Online
 - Beckhill Playground
 - Harehills Lane SID
 - Christmas Tree – Meanwood
 - Christmas Tree – Oakwood
 - Millfield School Xmas Lights
 - Chapel Allerton Planting
 - Community Highlights
 - Meanwood Children’s Halloween Competition
 - Meanwood festive photo fun competition
- Since the last Consultative Forum on 7th September 2020, the following projects had been declined:
 - ABC Summer Project
 - ACamps Summer Camps
 - Art Camp 2020
 - Brave Words CIC
 - Breeze Summer Holiday Camp
 - D-Jing In The Woods
 - Found Fiction
 - Moortown Monday Night Youth Project
 - Scrap Art Project
- Youth Activities Fund updates were provided at 26 – 28 of the submitted report. Balances and projects were set out at Table 2 of the report;
- Paragraph 31, Table 5 of the submitted report outlined projects currently on running or on hold and how they have been affected by the pandemic 2020/21;
- Paragraph 32 outlined the Capital Budget 2020/21 and Table 6 provided an update on the projects to date;
- The CIL balance was £123, 921.18, with the CIL allocation outlined in Table 7;
- Paragraph 34 provided the Community Committee with an up-to-date balance statement of the Inner East COVID-19 Discretionary Funds.

RESOLVED – To note the details of the following:

- a) Wellbeing Budget position (Table 1)
- b) Projects approved via Delegated Decision
- c) Youth Activities Fund position (Table 2)
- d) Skips and Ward Pots (Table 4)

- e) Position statement on projects funded by the committee that are currently on hold and how they have been affected by the Coronavirus pandemic (Table 5)
- f) Capital Budget (Table 6)
- g) Community Infrastructure Levy Budget (Table 7)
- h) Community Committees and the Communities Team response to the Coronavirus Pandemic.

The Community Committee approved the following applications:

- Nubian Noire – £591 Wellbeing Fund
- Moortown Park (Environmental Improvements) – £11, 270.00 Capital Budget
- Moortown Ward Grit Bin Refills – £1,854.26 Wellbeing Fund

68 Inner North East Community Committee - Update Report

The report of the Head of Stronger Communities updated Members on the work which the Communities Team are engaged in, based on priorities identified by the Community Committee. It also provided opportunities for further questioning, or to request a more detailed report on a particular issue.

The report also provided updates on some of the key activities between Community Committee meetings and functions delegated to Community Committees, Community Champion roles, community engagement, partnership and locality working.

Appended to the report included a copy of the Facebook highlights, and information in relation to the Chapel Allerton, Moortown and Roundhay COVID-19 Facebook Groups.

Members highlighted key activities undertaken in terms of their role as Community Committee Champions, including:

- Cleaner Neighbourhoods Team (CNT) – the CNT have maintained a limited service prioritising issues from the start of lockdown. It was confirmed that in August all staff had returned to work, although pressures remain during November as Leeds were placed in lockdown;
- Fly-tipping – records of high numbers in the area and around Beckhills recycling yards, Mexborough and Saville’ and the surrounding area;
- Litter and bins – a dedicated team are now in place to empty bins and litter picking shop fronts;
- The number of cases being handled by “Enforcement” across the 3 wards was discussed;
- Leeds Anti-Social Behavioural Team (LASBT) – the service had seen an increase in caseloads in the 6 months to the end of September. INE currently has 24 active ASB cases, with no specific trends;
- Emerging Issues – recent reports of youth nuisance with gaining unauthorised entry to the tower block in Potternewton;
- Key Messages and Resident Behaviour during the Pandemic;
- National Flu Immunisation Programme.

The Committee noted the intention for the Executive Member (Learning, Skills and Employment) to provide an update on Employment and Skills at the next formal Community Committee meeting.

Members' attention was also drawn to the following:

- Target Ward Update;
- Meanwood Valley Partnership's 'Love Meanwood' project aiming to create a vision for Meanwood continues to develop;
- Neighbourhood Centres;
- The INECC Facebook page has 833 followers and the 7th most popular CC page. Facebook engagement on posts was also highlighted;
- Posts and content engagement in relation to the COVID-19 Facebook Ward Pages.

(During consideration of this item, Councillors Goddard and Rafique left the meeting by 19:40, and as such, the meeting became inquorate (Council Procedure Rules 28.3 refer) and no formal decision could be made)

RECOMMENDED: To note the contents of the report.

69 Date and Time of Next Meeting

RECOMMENDED – To note the date and time of the next meeting as Monday, 1st March 2020 at 6pm.

(The meeting concluded at 19:55)

This page is intentionally left blank



Report of: Head of Stronger Communities

Report to: Inner North East Community Committee

Report author: Localities Officer: Zahir Lunat

Tel: 0113 3782956

Date: 1 March 2021

To note

Inner North East Community Committee

COVID19 Vaccination Programme Update

Purpose of report

1. To provide the Inner North East Community Committee with a verbal update on the work the NHS are undertaking in relation to the nationwide Covid19 vaccination programme in response to ongoing need in communities as the Covid-19 Pandemic has continued.

Main issues

2. The verbal report is provided at the specific request of the Community Committee.

Recommendations

3. The Inner North East Community Committee is asked to note the contents of the verbal report that will be provided by Dr Baker and Dr Paul.

This page is intentionally left blank

Report of: Martin Farrington - Director of City Development

Report to: Inner North East Community Committee
[Chapel Allerton, Moortown and Roundhay]

Report author: Finn Campbell

Date: Monday 1 March 2021

To note

Inner North East Community Committee – Draft Connecting Leeds Transport Strategy – Consultation

Purpose of report

1. To bring to members' attention details of the consultation on the draft Connecting Leeds Transport Strategy.

Overview

2. The draft Connecting Leeds Transport Strategy details how we are going to achieve our vision for Leeds, "to be a city where you don't need a car". The strategy outlines the key challenges and opportunities facing the city, our "big moves" and targets for 2030 in order to achieve the city wide vision, support the three overarching objectives to tackle Climate Change, deliver Inclusive Growth and improve Health and Wellbeing.
3. In order to realise our vision, meet our objectives and continue to deliver transformational change we need to work with individuals and businesses, regional bodies including the West Yorkshire Combined Authority and Transport for the North as well as Central Government.
4. It is clear however that these actions alone will not be enough to meet the scale of the climate emergency challenge facing us all and that further measures need to be considered as part of the Transport Strategy's development. The draft strategy therefore presents options to allow the continuation of our transport conversation with everyone in the city to agree the Connecting Leeds Transport Strategy.

About the consultation

5. This consultation is an opportunity for everyone to inform the final strategy and join the conversation to shape transport policy.
6. A copy of the executive summary for the strategy is attached to this report. Full copies of the report and online questionnaire are available here: www.leeds.gov.uk/transportconversation. As part of the consultation process a webinar series has been launched to discuss topics of the strategy in more detail. All sessions are free and can be joined via a computer, smartphone or landline number. Further details can be found on the above address.
7. In addition to the webinars, we will be attending all community committees over the next couple of months as well as dedicated sessions with seldom heard and equality groups. Printed copies of the strategy and questionnaire are available on requests and are supplied with a freepost return envelope. These can be requested via email at transport.strategy@leeds.gov.uk.
8. The consultation is live until Friday 26th March 2021.

Inner North East Area

9. The draft strategy sets out our proposed approach to transport policy for the whole city. Whilst the strategy is not spatially defined, policies and measures detailed in the document and subsequent action plans will cover the **Inner North East Area**.
10. The consultation on the draft strategy is an opportunity to highlight issues affecting the local area.

Connecting Leeds

TRANSFORMING TRAVEL



Page 19



Connecting Leeds **Transport Strategy**

Executive Summary

Foreword

Our ambition for Leeds is to have a strong economy within a compassionate city.

To achieve this goal we are committed to delivering the priorities set out in our Inclusive Growth and Health and Well-Being Strategies, and doing all that we can to tackle climate change. The extent to which we are able to deliver success in these areas will be influenced by the action we take to transform mobility and connectivity in the city, the region and wider north.



Page 20
We are a city ready to move forward together - sitting proudly at the heart of the Northern Powerhouse. With the arrival of High Speed 2 and Northern Powerhouse Rail transforming our intercity connections we need to ensure that mobility in Leeds in the next decade supports sustainable economic development for everyone. Delivering transformational economic growth not only in Leeds but across the city region and the north; creating a strong labour market with increased access to jobs and talent and opportunities for everyone is at the heart of our strategy.

Over the last few years we have seen significant transport investment which has made our city easier to walk, cycle and travel by public transport in. At the same time, the effect of overdependence on private cars on us, our families

and communities has become ever clearer. It has contributed to an increase in poor public health across our city, with streets that can often be polluted and unwelcoming places to live, walk or cycle. It is also bad for business with millions of pounds of lost productivity caused by congestion.

The Covid-19 pandemic has changed the way we live our lives, from how and where we work to how we spend our leisure time. Whilst we do not know the long term effects that this will have on our lives we do know that people want to walk and cycle more.

Our vision for Leeds is for a city where walking, cycling and green public transport become the most appealing, practical and best value choices for many more journeys. Where streets are attractive spaces for everyone to enjoy.

This strategy outlines how we aim to put walking, cycling and green public transport infrastructure first, the challenges we face as a city but also the opportunities there are to continue to transform travel in Leeds. The strategy will also set out big moves and how we are going to deliver the change required.

With the Climate Emergency declaration, how we manage and plan transport has important implications for our streets, public places, and future growth as a city but most importantly for everyone, who lives, works or travels in Leeds. We have started to take action to address the levels of congestion, crowding and unreliability on our transport network. However, there is more that can be done to improve everyone's experience of travel in our city.

There is no single solution. We need to continue to get people to move away from their cars to deliver an affordable, reliable, safe and zero carbon public transport network for the city which supports streets for people and unlocks the power of transport for a fairer, greener and more prosperous Leeds.

Councillor Judith Blake. Leader Leeds City Council



Executive Summary

This executive summary provides an overview of the draft Connecting Leeds Transport Strategy. It outlines our vision, objectives and big moves which combined will support the inclusive growth strategy, climate emergency ambition and health and wellbeing strategies.

Our Vision

Our vision for Leeds is to be a city where **you don't need a car.**

Where everyone has an **affordable zero carbon choice** in how they travel.

We want to **Connect Leeds, Connect Communities, and Connect Businesses** together in the most sustainable ways.

This means a city:

Where walking and cycling are the first choice for short journeys, creating safe and healthy environments where active travel is prioritised and road danger is eliminated;

With a fully integrated low carbon transport network with a network of modes – each of them accessible, viable and sustainable, which together will connect everybody with everything. By reducing transport's damaging impact on the environment, we will support Leeds commitment to becoming a carbon neutral city by 2030.

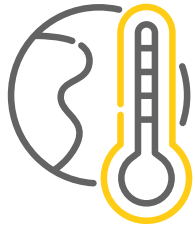
With decreased car dependence, with a shared go anywhere active and public transport network. That enables people to make choices that are right for them by providing smart, reliable, real time, multi-modal travel information, or making use of technology to decide not to travel at all.

With efficient land use for a well-connected productive city centre, moving more people not vehicles – prioritising mass transit, buses and active modes of travel.

That enables everyone to have equal access to the same opportunities. Where the cost of travel is reduced and people need to travel less.

The Objectives

We want to ensure economic opportunities are available to everyone, create a healthy and caring city for all and through a range of travel choices address the climate emergency, by moving away from personal car ownership, towards a shared, go anywhere low carbon transport network. To support our vision for Leeds we have three over-arching objectives in the transport strategy.



TACKLING CLIMATE CHANGE

Climate change is one of the greatest challenges we face globally and as a major city we have a key role to play. We declared a Climate Emergency in 2019 and pledged to make Leeds carbon neutral by 2030. In order to meet our 2030 target we must persuade people to adopt more sustainable travel choices by:

- ❑ Reducing the need for travel and the number of car journeys, especially at peak times
- ❑ Encouraging people to choose active travel and public transport
- ❑ Improving the efficiency of the transport network and make better use of our road space
- ❑ Encouraging the uptake of zero emission vehicles in freight, public and private transport



DELIVERING INCLUSIVE GROWTH

Ensuring that as Leeds continues to grow, that this is inclusive and benefits all our citizens and communities. The Leeds Inclusive Growth strategy sets out 12 big ideas to encourage inclusive growth. In order to support the delivery of inclusive growth and make Leeds an attractive city for business to grow and invest in, we are going to:

- ❑ Support individuals access more employment opportunities through a comprehensive transport network
- ❑ Develop and regenerate places through continued investment in transport infrastructure
- ❑ Improve productivity by investing in a more time and cost efficient transport system
- ❑ Lower the cost of mobility, ensuring transport is affordable for everyone



IMPROVING HEALTH AND WELLBEING

The Health and Wellbeing strategy sets out 12 priority areas to help Leeds become the best city for health and wellbeing. "We want Leeds to be the most active city in England" and our priority is to get more people active more often. To improve health and wellbeing we are going to:

- ❑ Ensure walking and cycling are the first choice for the shortest journeys improving physical health
- ❑ Reduce the negative effects of transport on our local communities, improving air quality and reducing CO2 Emissions
- ❑ Help make Leeds the best city to grow old in and a child friendly city through making streets accessible to all
- ❑ Eliminate road danger by adopting a Vision Zero approach to road accidents

Big Moves

We have identified six big moves that will be the focus of the Transport Strategy. We believe these six big moves will move us towards achievement of our vision, objectives and targets.

Our Big Moves are supported by 12 policy areas, it is a combination of these policy areas that will deliver and ultimately enable our big moves to become successful.



De-carbonising Transport

Reducing the need to travel, re-mode how we travel away from private car use and encouraging further uptake of alternative fuelled vehicles and the infrastructure they need.

WE ARE GOING TO CONTINUE TO:

- Re-mode how we travel - making it easier to walk, cycle and use public transport.
- Reducing the need to travel - making it easier to access the same opportunities and amenities without having to travel as far.
- Support the uptake of alternative fuelled vehicles and associated infrastructure through publication of our Alternative Fuelled Vehicle Strategy
- Commit to all new infrastructure being carbon neutral and carbon negative where possible
- Continue to improve local environments through the planting of street trees, contributing to our wider ambition to create new woodlands through the planting of over 5.8 million trees

WE ARE GOING TO:

- Trial new technologies to make it easier to adopt low carbon choices such as on-street electrical vehicle charging points
- Work with partners to make it easier for everyone to access services closer to home.
- Ensure low carbon mobility choices are available throughout Leeds, serving the routes and locations people need.

WE MAY NEED TO CONSIDER:

- How we can further incentivise people to use the low carbon public transport network in partnership with the Combined Authority and bus operators.
- A low carbon zone, this could be similar to the Ultra-Low Emission Zone (ULEZ) in London, where the most polluting vehicles are subject to greatest charges based on CO2 emissions.



Creating healthier streets, spaces and communities

Ensuring walking and cycling are the first choice for the shortest trips, creating places and spaces where people want to spend time which are inclusive and accessible to all.

WE ARE GOING TO CONTINUE TO:

- Provide accessible, well designed space for walking and cycling, including developing local cycling and walking infrastructure plans for all Leeds Communities.
- Use street space more efficiently by tackling congestion and reducing traffic.
- Ensure our streets are safer for everyone by working with partners to reduce crime and anti social-behaviour
- Work with accessibility and inclusivity groups on the development of a street charter to reduce barriers to travel
- Maintain the Outer Ring Road as the primary route for vehicle trips around the city in order to support the transformation of our local streets.

WE ARE GOING TO:

- Adopt Vision Zero approach to road safety, where all accidents are preventable and liability is shared between, road users, engineers and road operators
- Create and support an integrated, connected network for all modes, enabling longer trips to be undertaken sustainably building on the 20 minute neighbourhood concept
- Lobby for greater allocation of funding for these types of measures, which are currently more challenging to fund
- Monitor our Active Travel Neighbourhood trials to see if they encourage people to walk and cycle more but also reduce rat-running
- Review parking management measures across the Leeds district to include more spaces for cycles, car clubs and Electric Vehicle charging
- Tackle barriers to active travel including bike storage at home and access to training
- Develop a local shared ownership model for transport within communities through the provision of car clubs and bike sharing.

WE MAY NEED TO CONSIDER:

- Different parking management measures to reduce vehicle dominated environments and incentives the uptake of alternatively fuelled vehicles.



Transform the city centre

Continue to deliver and develop transformational change in the city centre as a place for people and seamlessly integrating all modes, supporting role of Leeds as a local, regional and national economic hub.

WE ARE GOING TO CONTINUE TO:

- Deliver transformational change through the delivery of our new gateway locations on the Headrow, Park Row and the Corn Exchange making it easier to travel for pedestrians, cyclists and public transport users
- Invest in the city centre as a national, regional and local transport hub

WE ARE GOING TO:

- Encourage and facilitate traffic to move around the city centre rather than through it with the closure of City Square.
- Create a network of open and green spaces within our streets that make the city centre more attractive supporting the Our Spaces Strategy
- Support the role of Leeds City Station, enhancing its role as a regional transport hub and enabling for the integration of high speed rail
- Maintaining the Inner Ring Road to help facilitate the transformation of the city centre whilst also ensuring we reduce the physical barrier it places between communities, making it easier for people to access the city centre.
- Review our parking strategy including park and ride facilities.
- Re-assess how we use our existing water and rail network to best service the city especially in relation to freight.

WE MAY NEED TO CONSIDER:

- A workplace parking levy, this could charge employers who provide workplace parking, with monies raised being ring-fenced to invest back into transport.



Enhance Public Transport

Building on the successes we have had in recent years in improving bus and rail services and working with partners to ensure the meet the current and future needs of users.

WE ARE GOING TO CONTINUE TO:

- Work with partners to secure the investment needed to deliver transformational improvements to the rail network
- Work in partnership with the Combined Authority and the operators to create the best bus system which is an attractive and natural choice for everyone.
- Upgrade key bus corridors (including provision of additional bus priority measures) to provide fast & reliable high frequency bus services.
- Deliver City Centre Gateways to transform the public transport experience across the city.

WE ARE GOING TO:

- Develop our park and ride offer on key radial routes across the city.
- Upgrade all key bus corridors across the city to provide a core network of high frequency bus services.
- Promote demand responsive transport services to offer flexibility and connectivity across the city in areas not well served by traditional bus services.
- Work with the Combined Authority, bus operators and technology firms to encourage service and product innovations.
- Create a well connected and seamless network of active travel and public transport infrastructure and services with integrated ticketing and payment options.

WE MAY NEED TO CONSIDER:

- How different transport operating models could improve the public transport provision in the city
- How we can provide reasonably priced fares that further incentivise people to use the public transport network in partnership with the Combined Authority.



New Mobility Solutions

Thinking about transport differently, focusing on shared mobility and how we pay for transport, encouraging flexible transport choices and using technologies to improve mobility in the city.

WE ARE GOING TO CONTINUE TO:

- Consider new technologies and innovative approaches to delivery that can open new opportunities for travel including shared mobility and micro mobility modes.
- Continue our work with taxi and private hire vehicles to provide the best service for Leeds
- Continue to support the West Yorkshire Combined Authority in the development of the Demand Responsive Transport trial.

WE ARE GOING TO:

- Deliver mobility hubs across the city where several modes can be accessed in one location integrating transport
- Ensure accessibility considered as a whole system across the council, with transport acknowledged as just a single element alongside spatial planning and technology
- Define our Shared Transport Vision to include car clubs, bikes and scooters

WE MAY NEED TO CONSIDER:

- How autonomous vehicles can play a future role in mobility within the city.
- How we can support the better integration of freight services and local deliveries to reduce van mileage in the city
- Enhanced shared ownership models and how we can integrate shared transport modes into our existing mobility services, ensuring they are affordable and offer value for money



Deliver a Mass Transit Network

Delivering a low carbon mass transit in Leeds, enhancing the transformational work already going on throughout the city through partnership with the Combined Authority.

WE ARE GOING TO CONTINUE TO:

- Through the Bus Alliance, continue to deliver the Connecting Leeds and West Yorkshire-Plus Transport Fund investment programmes, to help transform our bus offer in the short term.
- Work in partnership with the Combined Authority to develop and deliver an advanced Mass Transit system as quickly as possible.

WE ARE GOING TO:

- Ensure that the right mass transit solution is delivered that integrates instinctively with the city and unlocks the benefits for the people of Leeds at the earliest opportunity.
- Ensure that it integrates with our existing transport network, creating an affordable, zero – carbon network
- Work with partners to secure the investment needed to deliver transformational improvements to the rail network to support the Mass Transit network

WE MAY NEED TO CONSIDER:

- The further opportunities mass transit can offer for the city including the opportunities for transit oriented development



Targets

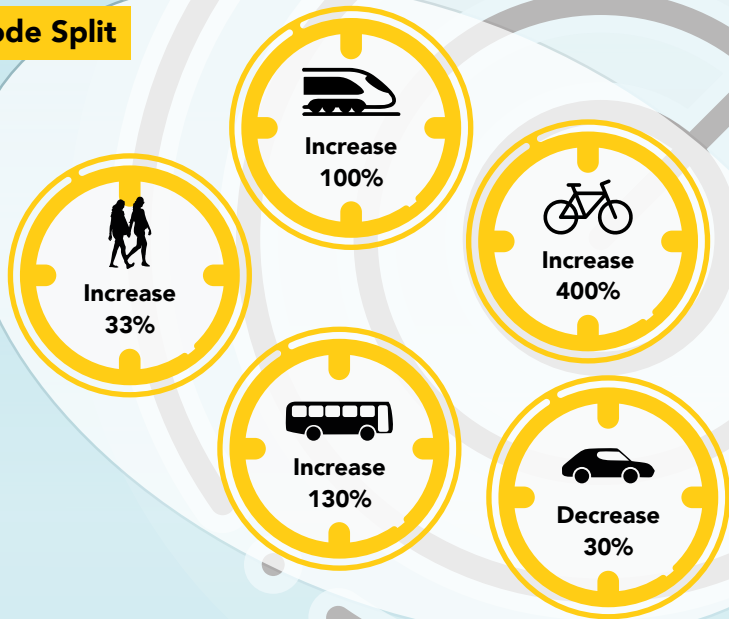
In order to achieve our strategic vision for Leeds to be a city where you don't need a car. Our overall target comprises of four components:

Climate Emergency

The Council is committed to making Leeds carbon neutral by 2030.

Mode Split

Page 26



Distance Travelled

To support our mode split targets, we need to reduce the length of car trips made in the city by 30%. That is on average 900 car miles per year.

Vision Zero

Zero people killed or serious injured on Leeds roads by 2040.

Our Big Leeds Climate Conversation, you told us that:

- 94.8%** believe that the climate is changing
- 93.4%** believe that climate change is due to human activity
- More than two-thirds** of respondents (**67.1%**) say that they already walk or cycle journeys less than a mile.
- 13.2%** would take the bus or train more often
- 33.2%** would pick up deliveries from a central location
- The exception to this is that **more than a quarter (26.5%)** of respondents say that they would consider switching to an electric or hybrid car

Our 2030 average trips components

- 31%** walking
- 41%** private car
- 2%** other
- 4%** cycling
- 22%** public transport

What you can do to help?

- Leave the car at home one day a week
- Visit places by public transport
- Have a web meeting instead of travelling to the meeting
- Walk the children to school

Meeting the Climate Emergency target

Meeting our pledge for Leeds to become carbon neutral by 2030 will be challenging. Transport accounts for 36% of all Carbon Emissions within Leeds. Our current policy projection will contribute to a reduction in CO2 emissions, however we need to do more to further reduce emissions. Our policies including our Bold and Big Moves detailed in this strategy will contribute up to a 43% reduction in CO2 emissions from transport by 2030.

The challenge in achieving net-zero carbon emissions is not one just facing Leeds, it is also facing regional and national government. The Department for Transport are currently working to a 2050 ambition for carbon neutrality and their policy projections are set out in Decarbonising Transport: Setting the challenge report. Recent announcements, bringing forward the ban on the sale of fossil fuelled vehicles to 2030 will help reduce carbon emissions however further policy actions are required.

Our Big Moves set out our focus areas for the transport strategy. To outline our proposals for each of the Big Moves, we have broken down each move into the following components:

WE ARE GOING TO CONTINUE TO:

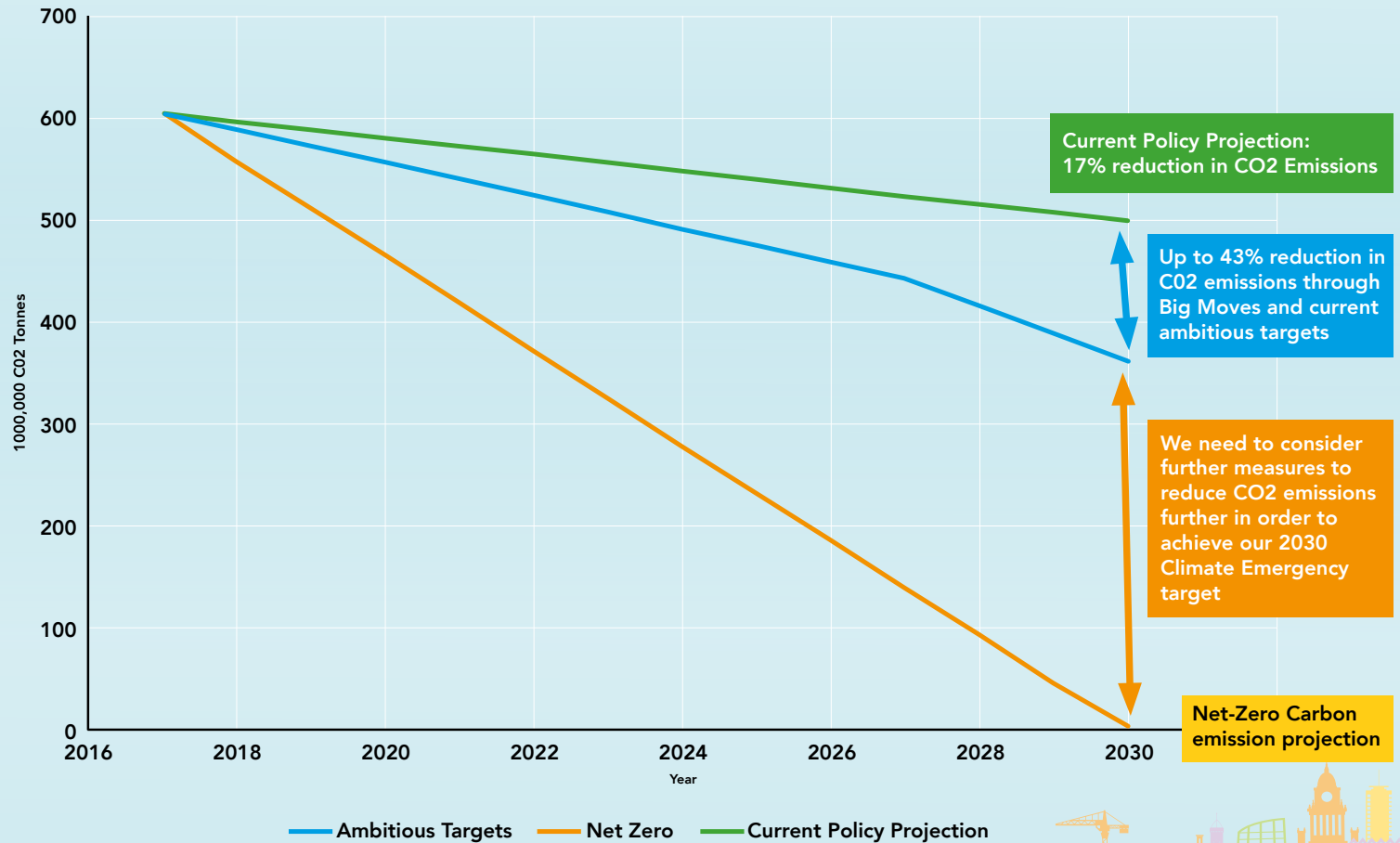
- This is where we outline what measures we are going to continue to do

WE ARE GOING TO:

- Measures we are going to introduce as part of this strategy to work towards our targets

WE MAY NEED TO CONSIDER:

- Measures we need to consider going forward in order to achieve our targets
- We will require support from Central Government to enable us to make these steps and changes to national policy to enable this to be achieved



Achieving and Delivering the vision

Achieving the vision and meeting our targets will be challenging, we need others to help. In order to deliver our strategy we will develop a series of action plans, which will detail short, medium and long term measures, transforming mobility in Leeds and supporting our objectives to be the best city in the UK. It will only be by working together that we can achieve our vision.

TO DELIVER THE VISION WE HAVE MADE A NUMBER OF IMPORTANT COMMITMENTS:

- We will guide the delivery of the transport strategy aligning it to support wider policies around creating an inclusive economy, health and wellbeing, well designed spaces and decarbonisation. We will lead by example. *#LeedsbyExample*
- As we deliver our Strategy we will continue to review the outcomes and where necessary make adjustments to ensure they remain relevant to achieving our goals.
- We will work collaboratively and adopt an open and committed approach to working with our partners.
- We will continue to explore a range of funding opportunities as they arise.
- We will engage with the citizens and businesses of Leeds to ensure the transport strategy meets their needs.

Page 28

TO DELIVER OUR AMBITIOUS STRATEGY, ACHIEVE OUR VISION AND MEET OUR OBJECTIVES, IT WILL TAKE A WHOLE CITY APPROACH WITH GENUINE ENGAGEMENT AND SUPPORT FROM CITIZENS, BUSINESSES AND PARTNERS.

- We ask the **citizens, visitors and businesses** to continue to engage with LCC to help inform the strategy, deliver our vision and work together to achieve these targets.
- We ask that the **Transport Expert Panel** we have established continue to support the development and delivery of mobility solutions in Leeds.
- We work in partnership with the **West Yorkshire Combined Authority** on a daily basis and will continue to do in the development and delivery of policies and priorities.

We believe that through this continued partnership approach better integration and outcomes can be delivered.

- We ask **The Government** to commit to a comprehensive long term funding package to give us certainty on our future transport investments and for co-ordination of different governmental policies.
- We ask that the government commits to the delivery of the eastern leg of **High Speed 2** to Leeds and that **Transport for the North** continues to work with us to enable the delivery of Northern Powerhouse Rail and other policies such as integrated ticketing.
- We ask **Network Rail** to work with us and the **Combined Authority** to bring forward the delivery of three new stations in Leeds as well as further improvements.
- We ask that **Highways England** works with us to reduce negative impacts of the Strategic Road Network on our the severance of our communities air quality or carbon emissions.
- We ask all **train operating companies and the DfT** to continue to invest in new greener rolling stock to increase capacity into Leeds Station and reduce overcrowding.
- We ask the **bus operators** to continue to work with us enhance bus services and vehicles across the city.
- We ask all developers support our vision for Leeds and help contribute to it and to continue to engage with us to support well connected development.

As part of our engagement strategy we are now seeking feedback on this draft strategy. Your feedback will be carefully analysed and will inform the final strategy for Leeds.

Next Steps

Public Consultation

December – February

Review of all consultation responses

February – April

Publication of new Transport Strategy

Early Summer 2021



Report of: Head of Stronger Communities

Report to: Inner North East Community Committee
(Chapel Allerton, Roundhay and Moortown)

Report author: Zahir Lunat – Localities Officer

Date: 1 March 2021

For Decision

Inner North East Community Committee - Finance Report

Purpose of report

1. This report provides the Community Committee with an update on the budget position for the Wellbeing Fund, Youth Activity Fund as well as the CRIS and Community Infrastructure Levy Budget for 2020/21.

Main issues

2. Each Community Committee has been allocated a wellbeing budget (revenue and capital) and Youth Activities Fund which it is responsible for administering. The aim of these budgets is to support the social, economic and environmental wellbeing of the area and provide a range of activities for children and young people, by using the funding to support projects that contribute towards the delivery of local priorities.
3. A group applying to the Wellbeing Fund must fulfil various eligibility criteria, including evidencing appropriate management arrangements and financial controls are in place; have relevant policies to comply with legislation and best practice e.g. safeguarding and equal opportunities and be unable to cover the costs of the project from other funds.
4. Wellbeing funding cannot be paid retrospectively. An application form must be submitted and approved by the Community Committee before activities or items being purchased through wellbeing funding are completed or purchased.
5. The amount of wellbeing funding provided to each committee is calculated using a formula agreed by Council, taking into consideration both population and deprivation of an area.
6. Capital (CRIS) injections are provided as a result of council assets being sold. 5% of the sale price (up to a maximum of £100k) of a council asset is pooled city-wide and redistributed to the

Community Committee areas on the basis of deprivation. The Community Committee will receive a new capital injection every 6 months.

7. Each Community Committee has also been allocated a Community Infrastructure Levy budget. For each CIL contribution, Leeds City Council retains up to 70-80% centrally, 5% is needed for administration and 15-25% goes to be spent locally. The money will be vested with the local Town or Parish Council if applicable, or with the local Community Committee and spend decided upon by that body. This local money is known as the 'Neighbourhood Fund' and should be spent on similar projects to the Wellbeing Fund (capital).
8. In the Inner North East Community Committee this means that the money for Chapel Allerton, Roundhay and Moortown will be administered by the Inner North East Community Committee.
9. It was agreed at the Inner North East Community Committee March 2018 that CIL monies for Chapel Allerton, Roundhay and Moortown would be spent in the Community Committee ward that it was generated in. At the INE Finance Sub Group meeting on 9 July 2020 it was agreed that decisions for CIL needs to be agreed at the relevant ward meeting or by contacting the 3 Ward Councillors. The exception is if the funding is over £25k it needs to be agreed at INE Finance Sub Group and ratified at INE Community Committee meeting.
10. Projects eligible for funding by the Community Committee could be community events; environmental improvements; crime prevention initiatives, or opportunities for sport and healthy activities for all ages. In line with the Equality Act 2010, projects funded at public expense should provide services to citizens irrespective of their religion, gender, marital status, race, ethnic origin, age, sexual orientation or disability; the fund cannot be used to support an organisation's regular business running costs; it cannot fund projects promoting political or religious viewpoints to the exclusion of others; projects must represent good value for money and follow Leeds City Council Financial Regulations and the Council's Spending Money Wisely policy; applications should provide, where possible, three quotes for any works planned and demonstrate how the cost of the project is relative to the scale of beneficiaries; the fund cannot support projects which directly result in the business interests of any members of the organisation making a profit.
11. Any request for funding would involve discussions with appropriate ward members. Where projects do not have support from the Community Committee and are not approved, applicants are offered further discussions and feedback if this is requested.
12. In order to provide further assurance and transparency of all decisions made by the Community Committee, any projects that are not approved will be reported to a subsequent Community Committee meeting.
13. Sometimes urgent decisions may need to be made in between formal Community Committee meetings regarding the administration of wellbeing and youth activity budgets and also regarding the use of the Community Infrastructure Levy (CIL) Neighbourhood Fund which has been allocated to the Community Committee. Alongside the Committee, designated officers have delegated authority from the Director of Communities and Environment to take such decisions.
14. The Community Committee has previously approved the following 'minimum conditions' in order to reassure Members that all delegated decisions would be taken within an appropriate

governance framework, with appropriate Member consultation and only when the following 'minimum conditions' have been satisfied:

- a. consultation must be undertaken with all committee/relevant ward members prior to a delegated decision being taken;
- b. a delegated decision must have support from a majority of the Community Committee elected members represented on the committee (or in the case of funds delegated by a Community Committee to individual wards, a majority of the ward councillors), and;
- c. Details of any decisions taken under such delegated authority will be reported to the next available Community Committee meeting for members' information.

15. Members are reminded that the necessary scrutiny of applications to satisfy our own processes, financial regulations and audit requires the deadline for receipt of completed applications to be at least five weeks prior to any Community Committee. Some applications will be approved via Delegated Decision Notice (DDN) following consultation with Members outside of the Community Committee meeting cycle.

16. Wellbeing Fund applications and Youth Activity Fund applications are considered at Finance and Policy Sub Group meetings, a sub group of the Community Committee. This group comprises a nominated Elected Member from each of the wards in the Inner North East Community Committee; Chapel Allerton, Moortown and Roundhay. The sub group makes the recommendations to award funding for projects which is then ratified by the Inner North East Community Committee.

Wellbeing Budget Position 2020/21

17. The total revenue budget approved by Executive Board for 2020/21 was **£99,110.00**.

Table 1 shows a carry forward figure of **£82,594.32** which includes underspends from projects completed in 2019/20. **£45,526.51** represents wellbeing allocated to projects in 2019/20 and not yet completed. The total revenue funding available to the Community Committee for 2019/20 is therefore **£136,177.81**. A full breakdown of the projects approved or ring-fenced is available on request.

18. It is possible that some of the projects may not use their allocated spend. This could be for several reasons, including the project no longer going ahead, the project not taking place within the dates specified in the funding agreement, or failure to submit monitoring reports. Due to this the final revenue balance may be greater than the amount specified in Table 1.

19. Community Committee is asked to note that, at the time of writing the report, there is currently a remaining balance of **£24,887.04**. A full breakdown of the projects is listed in Table 1 and is available on request.

TABLE 1: Wellbeing Revenue 2020/21

INCOME: 2020/21	£99,110
Balance brought forward from previous year	£82,594.32
Less projects brought forward from previous year	£45,526.51
TOTAL AVAILABLE: 2020/21	£136,177.81

Area wide ring fenced projects	£
Ward Pot & Skips	£43,652.67
Covid19 Ward Allocations	£30,000
Community Engagement	£1,000
Festive Lights	£20,326
CCTV (Chapelton)	£3,000
Total spend: Area wide ring fenced projects	£97,978.67

Area wide ward projects	£
Fusion Xtra	£2,740.00
Irish arts and cultural activities and events 2020-21	£900.00
Mini police uniforms	£761.70
(Cultural Heritage) Arts and Craft Market	£1,000.00
Roundhay Park Bowling Club - Flooring	£869.40
Fresh Leeds Community Radio C.I.C	£4000.00
10 th RadhaRaman Folk Festival	£2000.00
Nubian Noire	£591.00
Healthy Holidays - Christmas Provisions	£450.00
Total spend:	£13,312.10
Remaining Available Balance	£24,887.04

20. The following projects are presented for Members' consideration:

21. Project Title: Wilderness on your Doorstep

Name of Group or Organisation: LCC Parks & Greenspaces

Total Project Cost: £34,795.72

Amount proposed: £7,350.00 (Wellbeing) 2021-22

Amount agreed: £7,350.00

Wards covered: Chapel Allerton, Roundhay, and Moortown

Project Description: To encourage as many people as possible to discover, understand, protect and celebrate the wildlife of the Meanwood Valley, through a programme of wildlife events, bioblitzes, wildlife surveys, environmental education sessions with school children, and volunteer activities. As well as helping us to protect the wildlife and improve the local environment of the Meanwood Valley, this project will help to promote a healthy lifestyle to those who participate in all of the hands-on, outdoor physical activities that we plan to deliver.

To cover the cost of the ranger's salary, a hire vehicle and some additional tools, materials and publicity, we will require £23,000. The Meanwood Valley Partnership will be contributing £1000 to this project and we are applying for £7,350 from each of the 3 Community Committees that the Meanwood Valley sits within. We will therefore aim, as much as possible, to spread the delivery of the activities equally among the 3 Community Committees.

Community Committee Priorities:

- Best City for communities
- Support projects which improve the local environment and support environmental enterprise
- Support projects which reduce health inequalities and promote healthy lifestyles including physical activity and healthy eating
- Support projects which reduce social isolation

22. Project Title: Summer Bands in Leeds Parks 2021

Name of Group or Organisation: LCC City Development

Total Project Cost: £1,950.00

Amount proposed: £1,950.00 (Wellbeing) 2021-22

Amount agreed: £1,950.00

Wards covered: Chapel Allerton, Roundhay, and Moortown

Project Description: 1 concert at Chapel Allerton Park: Thursday 2 September - The After Hours, 1.30pm – 3.30pm. This concert is taking place at the same time as a Family Picnic in the Park event.

2 concerts at Gledhow Valley Woods: Sunday 20 June – Bassa Bassa, 2.30pm - 4.30pm and Sunday 18 July - Wakefield Orchestral Wind, 2.30pm - 4.30pm. (Friends of Gledhow Valley Woods have informed me that they won't be having a Fun Day in 2021).

1 concert at Meanwood Park on Sunday 4 July - Peace Artistes, 2.30pm - 4.30pm.

1 concert at Moortown Park on Saturday 26 June - Wakefield Metropolitan Band, 1-3pm. As part of the Moortown Park Summer Fayre.

1 concert at Meanwood Valley Urban Farm on Saturday 10 July – Drighlington Brass Band, 2-4pm. As part of the Meanwood Valley Urban Farm Summer Fair.

Community Committee Priorities:

- Best City for communities
- Best City for Children & Young People
- Best City for Health & Wellbeing

23. Project Title: A Midsummer Night's Showcase in Roundhay Park and Potternewton Park

Name of Group or Organisation: Front Room Productions

Total Project Cost: £11,917.00

Amount proposed: £500.00 (Wellbeing) 2021-22

Amount agreed: £500.00

Wards covered: Chapel Allerton & Roundhay

Project Description: The project will consist of two strands: 1) Our Summer production at Temple Newsam Estate, an abridged and accessible adaptation of *A Midsummer Night's Dream* (AMND) performed in the Walled Garden (funded by Arts Council England). 2) Pop-up performances of our hour-long Shakespearean highlights show *A Midsummer Night's Showcase* (Showcase) in the weeks leading up to AMND, performed in a series of public parks across Leeds – including Roundhay Park and Potternewton Park.

We are asking the Community Committee for some support towards the Showcase strand of this project, which will be rehearsed and performed as part of the wider, six-week project to take place in Leeds over Summer 2021.

24. Project Title: New shower facility and disabled toilet

Name of Group or Organisation: Harehills Baptist Church

Total Project Cost: £6,315.00

Amount proposed: £6,315.00 (CIL) 2020-21

Amount agreed: £3,158.00

Wards covered: Chapel Allerton

Project Description: Project is to provide shower facilities for when we host asylum seekers (10+ days) and a fully fitted disabled toilet facility which we don't have at present for a well used function hall. We also have regular wheelchair bound attendees.

The entrance to the hall premises has level disabled access and the new toilet and shower will mean our disabled access toilet is on the same level. It will benefit cafe users, many of whom are elderly; also those who attend the music and movement fitness group and will give other hall users confidence to come knowing these facilities are available. There are other times when this toilet access is necessary such as for other users of the premises.

Community Committee Priorities:

- Best city for communities
- Support projects which reduce social isolation
- Support projects which reduce health inequalities and promote healthy lifestyles including physical activity and healthy eating

Ring Fenced Allocation for 2021-22

INE Finance Sub Group agreed the following allocation for their ring fence budget:

Ward Pots - £10k per ward
 Community Engagement - £1k
 Chapeltown CCTV - £3k
 Festive Lights - £25k

Delegated Decisions (DDN)

25. Since the last Community Committee meeting on 2 December 2020, the following projects have been considered and approved by DDN.

Wellbeing, Youth Activity Fund, Capital Projects, Community Infrastructure Levy (CIL), Ward Pots.

Wellbeing

Healthy Holidays, Christmas Provision - £450.00

Capital Project

Gledhow Valley Road SID - £3500.00

Community Infrastructure Levy (CIL)

Harehills Lane SID - £3500.00

Ward Pots

Chapel Allerton Spaces – Living Advent Calendar - £731.00
 Meanwood Valley Urban Farm Public Access Defibrillator Project - £639.00
 Stainbeck URC Public Access Defibrillator Project - £1589.00 (CA Ward Pot - £794.50 & Moortown Ward Pot £794.50)

Declined Projects

26. Since the last Community Committee meeting on 2 December 2020 no projects have been declined.

Youth Activities Fund Position 2020/21

27. The total available for spend in the Inner North East Community Committee in 2020/21 including carry forward from previous year, was **£44,928.00**

28. The Community Committee is asked to note that so far, a total of **£29,267.00** has been allocated to projects, as listed in **Table 2**.

29. The Community Committee is also asked to note that there is a remaining balance of **£15,661.00** in the Youth Activity Fund. A full breakdown of the projects is available on request.

TABLE 2: Youth Activities Fund 2020/21

	£
INCOME:20/21	£44,360.00
Balance brought forward from previous year	£4,890.00
Less projects brought forward from previous year 19/20	£4,322.00
TOTAL AVAILABLE: 20/21	£44,928.00
Ward Projects	

Total available budget for 20/21	£44,928.00
Chapel town CMC Play Scheme	£1,640.00
DIY Natural Children's body products & wellbeing / Heritage Walk / Vision Board	£1,000.00
Summer Art Camp 2020	£3,040.00
WLAC – Youth Activity Fund Project	£4,800.00
LDM Summer Basketball	£500.00
Time Out summer Scheme 2020	£970.00
Make it BOOM	£3,000.00
Meanwood Junior Play Scheme	£1,000.00
New Horizon Summer Youth Project	£1,000.00
Product of the Environment	£5,920.00
RJC Dance Camps 2020	£3,200.00
Save our Generation	£703.00
Roundhay and Potternewton Beginners Cycle Sessions	£1,529.00
Prince Philip Centre Playscheme	£965.00
Total	£29,267.00
Balance remaining	£15,661.00

Ward Pots Budget (incorporating skips) 2020/21

30. The total available for spend in the Inner North East Community Committee in 2020/21 including carry forward from previous year, was **£43,652.67**.

31. There is currently a remaining balance of **£32,506.86** detailed in Table 4.

TABLE 4: Ward Pots 2020/21

Ward Pots	£	Ward Split		
		Chapel Allerton	Moortown	Roundhay
Ward Pots	£43,652.67	£14,611.25	£15,407.48	£13,633.94
Roundhay Park Bowling Club – Flooring	£869.40			£869.40
Temporary CCTV Reginald Terrace – Hall Lane	£744.00	£744.00		
Meanwood Christmas Tree	£622.00		£622.00	
Oakwood Christmas Tree	£1,071.00			£1,071.00
Chapel Allerton Planters	£425.00	£425.00		
Community Highlights Magazine	£200.00	£200.00		
Millfield Primary School Christmas Lights Funding 2020	£700.00		£700.00	
MVP – Halloween Pumpkin Competition	£300.00		£300.00	
MVP – Meanwood Festive Photo Competition	£300.00		£300.00	
Moortown Grit Bins Refill	£1854.26		£1854.26	

Living Advent Calendar	£731.00	£731.00		
Stainbeck URC Defibrillator Project	£1589.00	£794.50	£794.50	
MVUF Defibrillator Project	£639.00	£639.00		
Total	£10,044.66	£3,533.50	£4,570.76	£1,940.40
Lidget Lane Allotments	£159.59			£159.59
RAGA	£194.46			£194.46
Chapel Allerton Allotments & Gardens Association	£211.90	£211.90		
Lidget Lane Allotments Association	£219.65			£219.65
Meanwood Parkside Allotments Association	£315.55		£315.55	
Total (including skips)	£11,145.81	£3,745.40	£4,886.31	£2,514.10
Balance remaining (Total/Per ward)	£32,506.86	£10,865.85	£10521.17	£11,119.84

Position statement on organisations and projects affected by the Coronavirus pandemic

32. Table 5 below provides the Community Committee with a position statement on projects funded by the committee that are currently running or on hold and how they have been affected by the Coronavirus pandemic. The committee is asked to note the contents of the table and make recommendations.

TABLE 5: Projects currently cancelled, running or on hold and how they have been affected by the pandemic

2020/21

Well Being

Project Reference:	Project Name:	Organisation:	Pro forma received:	Comments:
INE.19.22.LG	Heroes, Warriors & Leaders	Morriyah Movement	No	Project Cancelled

YAF

Project Reference:	Project Name:	Organisation:	Pro forma received:	Comments:
INE.20.04.YF	8's-12's Summer Camp	Feel Good Factor	Yes	Project Cancelled
INE.20.08.YF	Young Masqueraders	Leeds West Indian Carnival	Yes	Project Cancelled
INE.20.13.YF	Multi-Sport Activity Camp with Swimming	LCC Sport & Active Lifestyles – Scott Hall Leisure Centre	Yes	Project Cancelled

Capital

Project Reference:	Project Name:	Organisation:	Pro forma received:	Comments:
INE.20.02.CAP	Beckhills Playground	Parks & Countryside	09/10/20	Pro forma returned – Project not commenced – awaiting match funding.

Community Infrastructure Levy (CIL)

Project Reference:	Project Name:	Organisation:	Pro forma received:	Comments:
INE.20.01.CIL	Roundhay Park - Litter Bins	Parks & Countryside	Awaiting pro-forma	Delay with bin order

Capital Budget 2020/21

33. The Inner North East Community Committee has a capital budget of £9,078.00 available to spend, as a result of new capital injections. Members are asked to note the capital allocation broken down by ward and summarised in Table 6.

TABLE 6: Capital 2020/21

	£
Capital Injection (2019/20)	£57,048.00
Less Expenditure	£
Friends of Roundhay Park	£20,000.00
Balance as at 31 March 2020	£37,048.00
New Injection 1 April 2020	£8,300.00
New Injection 18 November 2020	£1,000.00
Available Balance 1 April 2020	£46,348.00
St Martin's Stair Lift	£2,500.00
Beck Hill's Playground	£20,000.00
Moortown Park Fencing	£11,270.00
Gledhow Valley Road Speed Indication Display Camera (SID)	£3,500.00
Balance remaining	£9,078.00

Community Infrastructure Levy (CIL) Budget (2020/21)

34. The Community Committee is asked to note that there is now **£123,921.18** total available to the Inner North East Community Committee. Members are asked to note the CIL allocation broken down by ward and summarised in Table 7.

TABLE 7: Community Infrastructure Levy (CIL) 2020/21

	INE (£)	Chapel Allerton	Moortown	Roundhay
Budget as of April 20	£124,981.47	£61,995.50	£16,725.06	£46,260.90
Injection 1	£12,288.20	£8,292.21	£0.00	£3,996.00
Injection 2	£5,101.51	£3,773.25	£1,328.26	£0.00
Total Spend 2020-2021	£142,371.18	£74,060.96	£18,053.32	£50,256.90
Roundhay Park - Litter Bins	£4,950.00			£4,950.00
Landscaping a Happy and Healthy Outdoor Space	£10,000.00		£10,000.00	
Harehills Lane SID	£3,500.00	£3,500.00		
Totals:	£18,450.00	£3,500.00	£10,000.00	£4,950.00
Remaining Balance:	£123,921.18	£70,560.96	£8,053.32	£45,306.90

Additional considerations as a result of the Coronavirus pandemic

35. In light of the current Coronavirus pandemic the Community Committee is invited to discuss any specific considerations they would like to recommend for approval and whether they would like to commit any further funding to support the local volunteering efforts in their own communities.

The table below shows the allocation of the £10k COVID 19 Government Funding.

£10k COVID 19 (Govt Funding)	£	Ward Split		
		Chapel Allerton	Moortown	Roundhay
Organisations	£30,000.00	£10,000.00	£10,000.00	£10,000.00
Roundhay School Laptops				£3,225.00
PHAB		£23.00	£45.00	£112.00
Moortown Interact			£4,762.00	
Art Camp		£1,590.00		£636.00
Lemon Balm (MVUF)		£1,300.00	£1,500.00	
New Horizon		£1,800.00	£450.00	
RJC Dance		£637.00	£637.00	
Harehills Baptist Church		£1,000.00	£612.00	£408.00
Sikh Sports		£500.00		
BHI		£1,000.00		

Bracken Edge School		£600.00		
Totals	£20,837.00	£8,450.00	£8,006.00	£4,381.00

The table below shows the allocation of the £10k COVID 19 Discretionary Fund

£10k COVID 19 Discretionary Fund	£	Ward Split		
		Chapel Allerton	Moortown	Roundhay
Volunteer Hubs	£30,000.00	£10,000.00	£10,000.00	£10,000.00
CFYDC Chance		£1,250.00		
Interact		£800.00	£2,092.00	
Harehills Baptist Church - Freezer		£390.00		
Black Health Initiative (BHI)		£600.00		
St Aiden's Church		£500.00		
New Horizon		£500.00		
Totals	£6,132.00	£4,040.00	£2,092.00	£0.00
Balance remaining (Total/Per ward)	£23,868.00	£5,960.00	£7,908.00	£10,000.00

Corporate Considerations

Consultation and Engagement

36. The Community Committee has previously been consulted on the projects detailed within the report.

Equality and Diversity/Cohesion and Integration

37. All wellbeing funded projects are assessed in relation to Equality, Diversity, Cohesion and Integration. In addition, the Communities Team ensures that the wellbeing process complies with all relevant policies and legislation.

Council Polices and City Priorities

38. Projects submitted to the Community Committee for wellbeing funding are assessed to ensure that they are in line with Council and City priorities as set out in the following documents:

1. Vision for Leeds 2011 – 30
2. Best City Plan
3. Health and Wellbeing City Priorities Plan
4. Children and Young People's Plan
5. Safer and Stronger Communities Plan

6. Leeds Inclusive Growth Strategy

Resources and Value for Money

39. Aligning the distribution of community wellbeing funding to local priorities will help to ensure that the maximum benefit can be provided.

Legal Implications, Access to Information and Call In

40. There are no legal implications or access to information issues. This report is not subject to call in.

Risk Management

41. Risk implications and mitigation are considered on all wellbeing applications. Projects are assessed to ensure that applicants are able to deliver the intended benefits.

Conclusion

42. The Finance Report provides up to date information on the Community Committee's budget position.

Recommendations

43. Members are asked to consider/approve:
- a. Details of the Wellbeing Budget position (Table 1) (paragraph 19)
 - b. Wellbeing, Capital proposals for consideration and approval (paragraph 20)
 - c. Details of the projects approved via Delegated Decision (paragraph 24)
 - d. Details of the Youth Activities Fund (YAF) position (Table 2) (paragraph 28)
 - e. Details of Skips & Ward Pots (Table 4) (paragraph 29)
 - f. Details of the position statement on projects funded by the committee that are currently running or hold and how they have been affected by the Coronavirus pandemic (Table 5) (paragraph 30)
 - g. Details of the Capital Budget (Table 6) (paragraph 31)
 - h. Details of the Community Infrastructure Levy Budget (Table 7) (paragraph 32)
 - i. Details of the Community Committees and the Communities Team response to the Coronavirus pandemic (paragraph 33)

This page is intentionally left blank



Report of: Head of Stronger Communities

Report to: Inner North East Community Committee
(Chapel Allerton, Moortown and Roundhay)

Report author: Localities Officer - Zahir Lunat

Date: 1 March 2021

for consideration

Inner North East Community Committee – Update Report

Purpose of report

1. To bring to members' attention an update of the work which the Communities Team is engaged in, based on priorities identified by the Community Committee. It also provides opportunities for further questioning, or to request a more detailed report on a particular issue.
2. This report provides regular updates on some of the key activities between Community Committee meetings and functions delegated to Community Committees, Community Champions roles, community engagement, partnership and locality working.

Main issues

Updates by theme

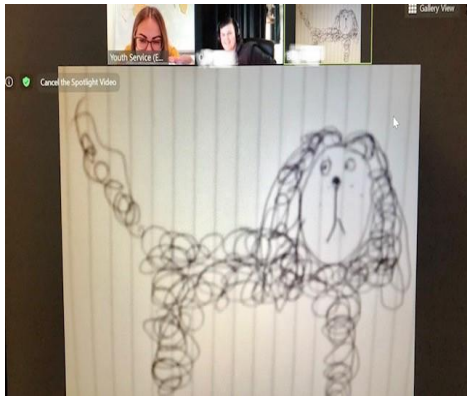
Children and Families - Councillor Mohammed Shahzad

Youth Service

Ensure the most vulnerable are protected

3. Upon entering the second lockdown on 05/11/20, the youth service updated all their provisions to ensure Young People across the wards felt supported and informed with respect to the latest information and guidance from the Government.

The Youth Work team recognised an increased demand for support and guidance with respect to further education. The team linked in with local partners to identify resources available and agencies who could support with the offer of future learning.

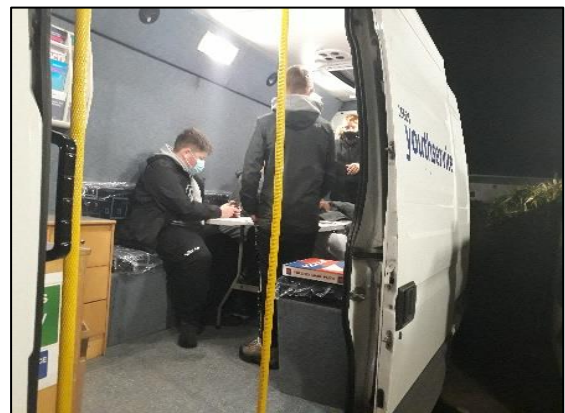


Planning and consultation with respect to a virtual offer commenced and they began to deliver Youth Work provision via Zoom. This offered Young People a further opportunity to engage with members of the Youth Team regarding a range of topics and challenges. In addition to this virtual offer they continued to offer phone calls and welfare checks to those young people who were either unable to engage with this provision or were identified as needing additional support.

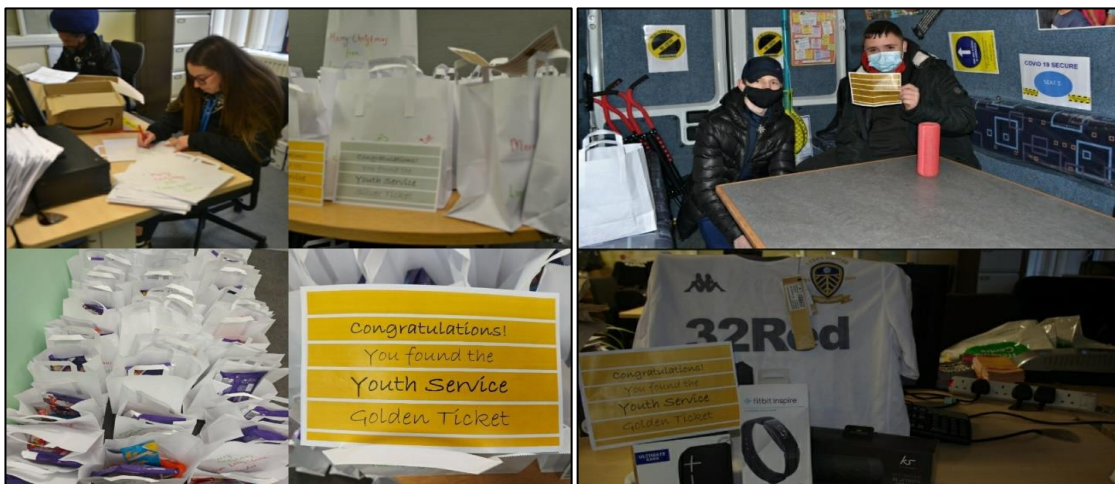
A significant amount of their detached provision delivered over the past quarter has been focused upon engaging Young People with respect the previous, current, and ongoing impact of the pandemic.

Improving social, emotional and mental health wellbeing.

4. During the last quarter Youth Service were able to take their mobile Youth Service vans back out and open the doors to Young People in the community. Ensuring the vans were made Covid Secure allowed us to once again engage with Young People in space in which they had previously identified as safe and someone where they would speak with Youth Workers. We covered various topics including education, wellbeing, substance misuse and sexual health. The return of the mobile vans proved a huge success across all wards.



5. The below pictures are a snapshot of the creation and delivery of over 100 festive wellbeing packs delivered across the Inner North East. Packs contained a range of supportive information of fun activities for Young People to complete over the festive period. They accepted a number of referrals from local partners to ensure packs were delivered to Young People who needed them the most. They also placed three 'Golden Tickets' within the bags which meant three Young People received an additional festive gift.



Support young people to make good choices and minimise risk-taking behaviours

6. When engaging with Young People in recent months there was a number of common themes with respect to what Young People missed the most during the periods of lockdown. One of these themes was the desire to return to some form of organised sporting activity. The Youth Service therefore prioritised areas in the Inner North East to ensure this was delivered as soon as possible.
7. After the Government announced that schools were to be closed for most children, it has left many of our young people without access to online learning. “This is increasing the inequalities in education, with some children having the technology to work from home whilst some do not have devices or the internet connections that are needed.
8. All Inner North East Councillors have supported local schools in their area by providing children with digital equipment – laptops/chromebooks to support home learning.
9. In the Chapel Allerton area Bracken Edge Primary School are due to receive 30 refurbished laptops. In Moortown ward area, six primary schools, a special school and two secondary schools will receive 3 chrome books each.

In Roundhay ward Roundhay school have received 15 brand new laptops specifically for children who are from deprived backgrounds and have no access to digital equipment in their homes.

Employment and Skills - Cllr Jacob Goddard (Champion)

Universal Credit

10. The table below shows the revised figures for the number of people claiming Universal Credit in the Inner North East Community Committee area that were unemployed in November 2020 is 3,494. This is an increase of 93% since March 2020 and an increase of 41 on the previous month.

Universal Credit Claimants (Not in Employment) 16-64yrs						
	March 2020		October 2020		November 2020	
	Number*	Rate**	Number*	Rate**	Number*	Rate**
Inner North East	1,814	4.0%	3,453	7.7%	3,494	7.8%
Chapel Allerton	1,019	6.2%	1,829	11.0%	1,851	11.2%
Moortown	355	2.5%	743	5.2%	757	5.3%
Roundhay	440	3.1%	881	6.2%	886	6.2%

*Number is the number of people claiming Universal Credit that are not in employment

**Rate shows the number of claimants not in employment as a percentage of the working age population

Employment and Skills Services

- The table below shows the number of people being supported from the Inner North East Community Committee area:

	Accessing Services		Into Work		Improved Skills	
	2020 (Apr – Dec)	2019 (Apr – Dec)	2020 (Apr – Dec)	2019 (Apr – Dec)	2020 (Apr – Dec)	2019 (Apr – Dec)
Inner North East	855	1,351	216	326	494	693
Chapel Allerton	437	694	121	174	246	308
Moortown	176	271	39	55	105	168
Roundhay	242	386	56	97	143	217

11. Due to the ongoing impact of COVID and the temporary closure of face to face services since March 2020, the employment and skills delivery models have been adapted and are continuing through a virtual or remote offer along with email and telephone support. During April 2020 to December 2020 8,755 people have accessed the Service, 855 of whom were from the Inner North East, a reduction of 37% when compared to the same period last year.

12. Across the city the service has supported 2,701 people into work, this reporting year (April – December 2020). 216 residents from the Inner North East have been supported into work, a reduction of 34% when compared to the same period last year. They were supported into work across all sectors with the largest numbers in health and care, food retail, logistics, distribution and transport. Over 258 new businesses were supported to recruit new staff and to provide support for staff facing redundancy. Recruitment continues in the health and care sector as it deals with winter pressures, and in digital roles across all sectors.

13. Leeds Employment Hub is a single point of contact for ESIF funded programmes and Job shops that provides tailored and comprehensive support into employment or education to all unemployed Leeds residents. A team of Employment Advisors deliver the programme by providing one to one support for eligible residents. The Service has

been successful in securing an additional £4m ESIF funding to support around 4,000 people in Leeds to improve their skills and significantly increase their prospects of moving into sustained employment. The funding is agreed from January 2021 to December 2023. This project will offer tailored preventative and remedial support to residents who are disadvantaged in the labour market. Delivery will be through the Community Hubs with Employment and Skills managing the contract with DWP.

14. The Service has been facilitating the recruitment of the Vaccinating Leeds programme on behalf of Leeds Teaching Hospital Trust, including the recruitment of Admin, Health Care Assistants and Front of House positions. The first in-take of interviews have been scheduled with roles currently ring-fenced for candidates from the Employment Hub. Interviews have been arranged for over 100 applicants, 72 of whom have passed the interview stage and are awaiting either references and or DBS/right to work checks before undergoing training with NHS.
15. Between April – December 2020 the service has supported 4,703 people across the city to improve their skills. From the Inner North East, 494 residents have completed a skills, a reduction of 29% when compared to the same period last year. Delivery of the 2020/21 programme commenced in September 2020 with 16 commissioned providers delivering online courses with an increased focus on digital skills and work focused courses. Since the start of the new academic year, September 2020, 490 courses have been advertised on the Leeds Adult Learning website.
16. New methods of Adult Learning delivery were supported to include blended learning. This has involved digital delivery through mobile phones, coupled with home learning options, remote delivery, including outdoor learning and the return to face to face learning when restrictions were lifted and delivery spaces will be reworked to ensure they are COVID secure. In addition home learning resource packs have been developed to enable a flexible approach, increasing pastoral support with a particular focus on vulnerable learners and learners who are unable to access online learning.
17. Leeds Apprenticeship Festival (LAF) will take place during National Apprenticeship Week, 8th - 12th February 2021 and will be held virtually for the first time. A dedicated webpage, created by an external organisation ODI, will host the festival. Visitors will be able to watch exhibitor Apprenticeship presentations and videos, contact employers directly, book meet and greet Q&A sessions with exhibitors and receive IAG support. 77 exhibitors have confirmed their attendance. A promotional campaign to advertise and raise awareness of the event commenced 4th January 2021.
18. The Levy Match Leeds was launched on 5th October 2020 to boost Apprenticeship numbers. Supported by a web based platform, the service enables large levy payers to transfer up to 25% of uncommitted funds to small and medium enterprises wishing to support an Apprenticeship. The online brokerage service aims to make this as simple as possible to ensure maximum levy investment is retained and invested locally to create more Apprenticeship opportunities. To date 19 SMEs and 5 Levy Payers have accessed the website and over £100,000 has been committed so far to support Apprenticeships.
19. The Kickstart Scheme, part of the Government's Plan for Jobs 2020, launched in September. The Employment and Skills service is now a registered Kickstart Gateway supporting businesses to offer 6 month paid placements for young people aged 16-24 currently on UC and at risk of long-term unemployment. Since the Kickstart Gateway

started at the beginning of October 2020, 247 placement opportunities have been submitted to DWP, offered by 62 employers.

20. A new subscription service, "The List", was launched in November 2020 through the Leeds City Council Website. Subscribers to The List receive the service's weekly job vacancies, Apprenticeships and course information. Since December 2020 those registered to receive our emails have increased by 114% to 4,685 and 17,000 emails were delivered.

- For further information please visit:
<https://public.govdelivery.com/accounts/UKLEEDS/subscriber/>
- For further information on Employment and Skills services and the support available please visit:
<https://employmentskillsleeds.co.uk/>
- For help or advice to find a job, an Apprenticeship, a course or training, please contact: esleeds@leeds.gov.uk Telephone: 0113 378 4576

Environment: Councillor Sharon Hamilton – Inner North East Environmental Sub Group

Cleaner Neighbourhood Team

21. CNT has faced a number of challenges since the pandemic hit. They have continued to work throughout but with a much reduced resource, particularly in the beginning, where they were only able to offer litter bin emptying and fly tipping removal and other issues deemed to be a public health risk. They were also unable to do much Enforcement work during the initial lockdown as lots of skip and waste removal companies were closed during this time, along with the Household Waste Recycling Centres and bulky waste collections were suspended.

22. As lockdown measures eased CNT were able to update our Risk Assessments and safe working instruction for office staff and front line workers and bring more services back. They have tried to go back to more area based work and zonal working in all of the wards as they did prior to Covid. Enforcement staff were dealing with lots of garden fires/bonfires, due to residents being forced to stay at home. Bulky waste collections are taking place and all HWSS are open. CNT continue to investigate each fly tip they come across and where evidence is found they will take enforcement action.

23. Due to another nationwide lockdown CNT have managed to keep more services running due to the safety measure they have in place. They are still running at approx. 15-20% down on staff due to Covid related issues, staff who are clinically extremely vulnerable are shielding and other staff off with Covid or self-isolating, however this fluctuates in numbers.

Table showing Environmental Enforcement activity in Inner North East area

Type	Chapel Allerton		Moortown		Roundhay	
	Totals	Totals	Totals	Totals	Totals	Totals
	Oct 2019 - Dec 19	Oct 2020 - Dec 20	Oct 2019 - Dec 19	Oct 2020 - Dec 20	Oct 2019 - Dec 19	Oct 2020 - Dec 20
Fly Tipping Enforcement	12	4	1	4	6	6
Littering Enforcement	6	3	0	3	2	0
Waste In Gardens Enforcement	14	5	3	5	3	4
Overgrown Vegetation Enforcement	3	2	12	2	17	2
Void Properties	8	0	2	0	1	3
Bins Left Out	3	4	2	4	11	3
Crew reported flytipping	354	19	34	19	32	40
Crew reported Littering	12	5	4	5	9	9
Scheduled Bulky Waste Collection	79	71	76	71	61	64
Side Waste reported	49	3	1	3	33	3
Grand Total	540	116	135	116	175	134

Community Safety - Councillor Mohammed Rafique (Champion)

Leeds Anti-Social Behavioural Team (LASBAT)

24. LASBT continues to work tirelessly, despite COVID restrictions, to try and reduce and prevent ASB across the Inner North East. Currently LASBT has 25 active cases across the committee area with no specific trends just general ASB issues. As previously mentioned the various lockdowns have seen ASB demand for service increase significantly as people are living at close quarters all the time and tolerance levels are exhausted.

25. Previous location issues in places such as Potternewton Park, Savile Park and various streets where unauthorised music events had been happening late last year have now ceased or at least the reporting has stopped. There are currently no emerging trends across the area and cases are largely issues between immediate neighbours though begging around the various retail centres in Meanwood remains an ongoing issue

Table showing LASBAT cases in the Inner North East area

OPENED / CLOSED October 2020

Ward	Active	Closed	Total
Inner North East	33	10	43
Chapel Allerton	17	4	21
Moortown	7	5	12
Roundhay	9	1	10

OPENED / CLOSED November
2020

Ward	Active	Closed	Total
Inner North East	32	8	40
Chapel Allerton	18	4	22
Moortown	5	2	7
Roundhay	9	2	11

OPENED / CLOSED December
2020

Ward	Active	Closed	Total
Inner North East	42	8	50
Chapel Allerton	22	4	26
Moortown	6	1	7
Roundhay	14	3	17

Health & Well Being – Cllr Angela Wenham (Champion)

Public Health

COVID-19 vaccine

Pfizer Biontech and Oxford AstraZeneca vaccines:

26. The NHS is now offering vaccinations to people who are most at risk from COVID-19. The two approved vaccines; Pfizer Biontech and Oxford AstraZeneca are safe and have been through rigorous checks, as well as extensive trials. Both vaccines do not contain any animal product or egg.
27. The vaccines are free of charge and only available through the NHS. Anyone who claims to be able to provide you with a vaccine for a fee is likely to be committing a crime and should be reported to the Police online or by calling 101. The NHS will never ask you to press a button on your keypad or send a text asking you to confirm you want the vaccine.

Priority groups to receive the first vaccine

28. The NHS is planning to vaccinate everyone in the top four priority groups including older care home residents and staff, everyone over 70, all frontline NHS and care staff and all those who are clinically extremely vulnerable.
29. People will only be able to book an appointment when you receive an invitation from your GP practice, please do not contact your GP practice or any other NHS services as you'll need to wait for your invite. When you receive your invite, please act immediately and attend your booked appointments.

30. Please continue to protect yourself and your loved ones and reduce the spread of coronavirus by following the guidelines - hand hygiene and social distancing in particular - this will help save lives.

Key facts on vaccines

- All vaccines are tested and regulated to make sure they meet safety standards
- After clean water, vaccination is the most effective public health intervention in the world for saving lives and promoting good health
- Immunisation currently prevents 2-3 million deaths every year from diseases like diphtheria, tetanus, pertussis, influenza and measles
- Vaccines protect other people in your community – by helping to stop diseases spreading to people who cannot have vaccines
- It's safe to give children several vaccines at a time and this reduces the amount of injections they need
- Vaccines teach your immune system how to create antibodies that protect you from disease
- Information about the COVID-19 vaccine can be found on the NHS website by visiting the following link [nhs.uk/CovidVaccine](https://www.nhs.uk/CovidVaccine)

We would like to ask that all our partners please share this information, via your networks, to embed the key messages highlighted:

- Please stay at home during the pandemic if at all possible and only make essential journeys.
- Keep a safe distance from others
- Wash your hands regularly, for 20 seconds.
- You must wear a face covering on public transport, in shops and in healthcare settings.
- No one in your household should leave home if any one person has symptoms
- If you have symptoms, stay at home and book a free test at [nhs.uk/coronavirus](https://www.nhs.uk/coronavirus) or ring 119.
- If you need to stay at home and have no family or friends for support, ring 0113 378 1877.
- An infographic has been produced. If you would like a copy please see below. We also have translated versions available in Arabic, Bengal, Czech, Farsi, Kurdish, Polish, Punjabi, Romanian, Slovak, Tigrinya and Urdu. Please get in touch if you would like copies of these. Please e-mail: Jonathan.Hindley@leeds.gov.uk

What signs and symptoms should I look out for?

- A high temperature,
- A new, continuous cough,
- A loss or change to your sense of smell or taste

Videos available here: <https://www.youtube.com/playlist?list=PLggQFjpTLgplq0r7-nFO9mT6j8Yk2vKBt>

- When, how and why should I get tested?
- When to get a test:

- For yourself, if you have coronavirus symptoms now (a high temperature, a new, continuous cough, or a loss or change to your sense of smell or taste).
- For someone you live with, if they have symptoms.
- If you live in England and have been told to have a test before you go into hospital, for example, for surgery.
- How to get a test:
- Apply online www.nhs.uk/coronavirus or call 119 (if you have problems using the internet) to book either:
 - Drive through test
 - Home test
 - Walk to test site at Bridge Street Community Church in Burmantofts (close to St James' hospital) – video available and posters are available in different languages. Please email to request these; Jonathan.Hindley@leeds.gov.uk
- Why to get tested:
- Testing is really important because if you know that you have tested positive for Covid-19, you can protect your family and friends.

Health and Wellbeing Partnerships

31. Please note these partnerships are currently on hold as partners have repurposed to meet the needs of local residents during the pandemic.

Organisers have recently contacted partners to check availability and are awaiting feedback from individuals and organisations.

Active Leeds

The Keeping Well at Home Programme

32. Active Leeds and Public Health created the Keeping Well at Home resources to support people that are shielding, clinically vulnerable or have mobility problems to keep moving during to the lockdown. These resources are to be extended from Monday 18th January 2021, to provide further support for people wanting to stay mobile and active at home. The new programme includes;

- Online Exercise Activities via Zoom
- IPAD Loan Scheme
- Personalised Support
- Digital activities on YouTube
- Activity DVDs
- Peer Support Groups
- Printed Resources such as the Keeping Well at Home Booklets

To request any resources or to seek support in accessing our programmes, please complete an online enquiry form <https://surveys.leeds.gov.uk/s/38MS7L/> or give the Public Health team a call.

For more detailed information about the Keeping Well at Home Programme, please look at our website active.leeds.gov.uk/keepingwellathome

Active Leeds Health Referral Programme

33. Active Leeds is accepting referrals and self-referrals to its referral programme throughout the lockdown. The programme focuses on adults and supports people who may be demotivated or just don't know where to start to become active. Each person has their own Health and Wellbeing Coach, they will support people in accessing and following a range of resources to keep them going during lockdown. To access the programme complete the online enquiry form: <https://surveys.leeds.gov.uk/s/SLNH3/> or contact us by phone or email.

How to contact us or access programmes?

Active Leeds accepted enquires and referrals through a range of methods;

- Keeping Well at Home Enquiry Form: <https://surveys.leeds.gov.uk/s/38MS7L/>
- Online Enquiry Form : <https://surveys.leeds.gov.uk/s/SLNH3/>
- Email: Health.Programmes@Leeds.gov.uk
- Tel: 0113 3783680
- Healthcare Professionals can refer directly through the Healthy Living Template on System one.

Working Together to Keep People Well during spells of Cold Weather

34. Every year the [Cold Weather Plan for England](#) describes the actions we can all take to reduce the negative impact of cold weather on our health and wellbeing. Although there are several factors that contribute to this, in many cases simple preventative action could avoid many of the deaths, illnesses and injuries associated with the cold. Many of these measures need to be planned and undertaken in advance of cold weather.
35. Public Health takes a life course approach and aims to increase the effectiveness of interventions throughout a person's life. It focuses on a healthy start and then targets people at critical periods when they are more vulnerable to the effects of cold weather e.g. pregnancy and older age.
36. Cold weather presents risks to certain groups listed below. The ongoing Covid-19 pandemic can add and pose additional risk to those who are clinically and socially vulnerable.

Impact of COVID-19

37. A number of important risk factors are shared across cold weather and COVID-19, which may amplify an individual's risk to both hazards. The potential interactions between cold weather and COVID-19 include:
- shared risk factors amongst population sub-groups affected by both cold temperatures and COVID-19
 - clinical impacts arising due to concurrence of cold weather and COVID-19

- increased exposure to cold temperatures due to change in patterns of energy use at home, fuel poverty and reduced access to warm public spaces
- reduced access to social and community networks and resources
- change in patterns of health and social care use, access and delivery and health seeking behaviour

Some things we are encouraging services in Leeds to do;

Sign up to receive Met Office Weather Alerts

38. Watch and listen for the Met Office weather alerts on TV, Radio and Internet and email all year round. These alerts can assist you with information to help your staff and clients.

Sign up to receive Cold Weather Alerts

39. These Alerts are comprised of different levels of response and actions needed based on cold weather threshold. These responses are set within the Cold Weather Plan for the UK. The thresholds have been developed to trigger an alert when severe cold weather is likely to significantly affect people's health. The alerts take account of temperature along with other cold weather threats such as ice and snow.

40. The Met Office will issue specific [Cold Weather Alerts](#) from 1 November 2020 through the Christmas and New Year period to 31 March 2021. There are five levels:

- Level 0 (long term planning, all year)
- Level 1 (winter preparedness and action, 1 November to 31 March)
- Level 2 (severe winter weather is forecast – alert and readiness)
- Level 3 (response to severe winter weather – severe weather action)
- Level 4 (major incident – emergency response, declared by central government)

Support your Workforce to become a ‘Winter Friend’

41. A Winter Friend is someone you can count on. A friendly and helpful member of the community who genuinely cares about the wellbeing of the people around them. They are thoughtful, approachable and never judgemental – sensing when someone needs a bit of support and offering a hand without expecting anything in return.

42. It could be something as simple as helping out with day-to-day tasks from gritting a neighbour's path when it gets icy to sharing local knowledge or a warming winter recipe. Anyone can sign up to become a winter friend by visiting www.winterfriends.org where they can also find resources such as purse friendly warming recipes, rainy day activities for kids, top tips on heating the home and staying warm or help and advice on where to get the flu jab.

Follow now on Twitter @wntrfriends for inspiration and ideas of what others are doing

Familiarise yourself with and make use of the NHS Help Us Help You campaign resources

43. In recent years there has been an increasing emphasis on people taking responsibility for staying healthy and managing their own health and 'Help Us, Help You' is a powerful new way to build on this.
44. The 'Help Us Help You' campaign focuses on high impact interventions such as promoting flu vaccinations, increasing medicine uptake, keeping warm and eating well. All of us can take simple steps to look after our health and of others, this includes staying warm, eating well and checking up on vulnerable neighbours. By looking after yourself and those around you, you really will be helping us help you. This campaign helps people – whether you work on the frontline or are a member of the public – to understand how you can stay well.

Other Work Programmes Supported and Delivered by the Public Health Winter Group

Emergency Food on Hospital Discharge

45. As part of Age UK Leads' Hospital to Home service, the Public Health winter group have identified non recurrent funding to support vulnerable/older residents who have experienced a crisis situation or have been discharged from hospital with no known food, support or PPE at home.
46. The support also provides the opportunity for services to identify and support the most vulnerable people who may be unable to access services in the short term. It also allows for positive conversations between patients, services and hospital departments to identify future and long term support needs around food and nutrition with appropriate referrals and support interventions put in place.

Updates from Key Services

Neighbourhood Centres

47. They provided queue markers which businesses could place on the floor and ground showing people where to queue. All businesses agreed to make available to other businesses and offer them where they saw problems occurring. We left these at 20 locations outside the city centre and in Inner North East this was: Roundhay (Manning Stanton Estate Agents) and Moortown (Rand Coffee Roastery).
48. Updates are circulated to all businesses for which we have email addresses around the city. They are sent out each week and feature the latest info on grants, new conditions / opportunities for businesses and some advice and good news stories for business. The aim is to provide all the help possible to retain the businesses in our district centres.
49. Until businesses can concentrate on development rather than survival, we have temporarily stopped launching new town teams across the city. In place they weekly visit different areas of the city to see how things are doing and obtain additional email addresses we can send the ongoing help and advice to. Roundhay, Oakwood and Meanwood are the next businesses in Inner North East to be visited which will occur in February.

Housing

50.COVID-19

Since the first lockdown started in late March the Tenant Engagement Team have continued to change the way they work due to being unable to meet residents, partners and contractors face to face. Since that time the team have;

- Continued to hold meetings on-line and have evolved to using Zoom for a number of them.
- Signposted residents to organisations who have assisted residents to converse with family / friends on-line.
- Ensured colleagues in the team are regularly contacted to dispel any feeling of isolation.
- Some team members have continued to volunteer with local charities to assist in the collection/delivery of food and prescriptions.
- The team have adapted well to working from home, staying in contact and constantly helping each other.

51.Engagement / Involvement

- Continue to keep in regular contact with groups and involved residents in the area.
- Preparing to launch a 'virtual walkabout' for the Beckhill estate on 'Your Voice Leeds' giving more people in the area the opportunity to be involved and put forward suggestions / report in areas with issues.
- Currently working with New Build Team on proposed development on Scott Hall Drive. Part of the consultation is also being completed through Your Voice Leeds.

52.Housing Advisory Panels

- INE HAP started the year in April with a budget of £39,109.79 (including a carry-over from last year of £6,063.53)
- So far this financial year 12 projects have been approved with an accumulated spend of £29,917.17. The funded projects are split into the following themes;
 - Environment and Housing 42.23%
 - Health and Wellbeing 31.22%
 - Community Safety 3.05%
- A number of environmental projects are still awaiting completion. Potternewton Court, Potternewton Heights and Button Hill as well as one project that was completed just before the original lockdown but snagging not completed. These have all been chased up.
- Still have vacancies for Housing Leeds residents on Inner North East Housing Advisory Panel
- 'Plan on a Page' for 2021/2 ready to be passed back to HAP members for approval. This version includes information around climate change emergency

53. Community Payback

- Since March 2020 teams from Payback have been unable to work in communities. It is hoped that teams (although reduced in number will be back out completing referrals in the coming months.

54. Working In Partnership

- Meetings with third sector organisation, partners continue to take place virtually via Skype, Zoom, What' app. Regular contact made with groups to advertise Funding Leeds and HAP funding

Community Hubs

The Reginald Centre

55. Their sites were adapted and are fully Covid safe, this has enabled staff to continue to provide a key service to our communities. Our staff are doing a combination of F2F work and working from home to support the service.

Customer Services F2F is limited to emergency enquiries as below:-

- Booking telephone appointments
- Booking PC slots using Net loan and using Self Service PC's
- Collecting LWSS vouchers
- Providing proofs for LWSS
- Requesting Trussell Trust e-vouchers
- Posting out of Council Tax bills
- Temporary Parking Permits
- Raising repairs
- To Drop Off documents
- To Purchase Radar Keys
- Tenancy Termination Notices

Library/PC Usage

56. They offer a combination of our browsing/non browsing model dependant on Leeds Tiers/Lockdown.

Currently due to lockdown restrictions we are using our non-browsing model. Customers can reserve books via our Order and Collect Service or book a 45 minute PC session (which can be extended if needed).

Our new 'Selection Bags' will also be available for customers to order from next week, these will have a selection of 6 books for adults or children ranging from crime, romance, key stages, picture books etc.

Job shops

57. The Job shops staff are currently working remotely with customers via email and telephone, offering the full range of services including assisting with job searching, creating or updating a CV, completing job applications and preparing for interviews.

WFH/Other voluntary duties

58. Since March 2020 the team have also assisted in various other service areas including delivering food parcels, packing food in the warehouse, Library Befriending Service, Q Matic appointments, Test and Trace, LWSS line, Golden Number line, Council Tax and Benefits telephone line and emails.

Update from Senior Localities Officer

59. The Community Cares Volunteer (CCV) scheme continues to provide a response to Covid-19 and support community members facing challenges due to the pandemic. InterACT and St Edmunds continue to support the Moortown and Roundhay wards respectively, but the Chapel Allerton ward is now being supported solely by Touchstone. Touchstone have continued the good work that they had started with partner organisations Feel Good Factor, Zest, Shantona and Space 2, and all 3 CCV Hub organisations continue to be supported by LCC Communities Team.

60. The BAME Health & Wellbeing Hub extension project is progressing with the funding package now in place and a planning submission in. Once planning consent is secured, the proposal will see an extension added to the existing building that will provide additional space for activities and better connect the building to the garden area. The project is being financed by the Chapel Allerton Ward Councillors from their Ward Based Initiative capital funding.

61. Two additional publically accessible defibrillators are to be provided in the INECC area. Working with community partners Stainbeck URC and Meanwood Valley Urban Farm, funding has been secured and the defibrillators should be in place by the spring. The Stainbeck Church defibrillator has been joint funded by Chapel Allerton and Moortown Ward Members who have also committed funds to the farm's project in addition to contributions from the INE Housing Advisory Panel and Weetwood ward Councillors

Corporate Considerations

Consultation and Engagement

62. The Community Committee has, where applicable, been consulted on information detailed within the report.

Equality and Diversity/Cohesion and Integration

63. All work that the Communities Team are involved in is assessed in relation to Equality, Diversity, Cohesion and Integration. In addition, the Communities Team ensures that

the wellbeing process for funding of projects complies with all relevant policies and legislation.

Council Polices and City Priorities

64. Projects that the Communities Team are involved in are assessed to ensure that they are in line with Council and City priorities as set out in the following documents:

Vision for Leeds 2011 – 30
Best City Plan
Health and Wellbeing City Priorities Plan
Children and Young People’s Plan
Safer and Stronger Communities Plan
Leeds Inclusive Growth Strategy

Resources and Value for Money

65. Aligning the distribution of community wellbeing funding to local priorities will help to ensure that the maximum benefit can be provided.

Legal Implications, Access to Information and Call In

66. There are no legal implications or access to information issues. This report is not subject to call in.

Risk Management

67. Risk implications and mitigation are considered on all projects and wellbeing applications. Projects are assessed to ensure that applicants are able to deliver the intended benefits.

Conclusions

68. The report provides up to date information on key areas of work for the Community Committee.

Recommendations

69. The Community Committee is asked to note the content of the report and comment as appropriate.

Background documents¹

70. None.

¹ The background documents listed in this section are available for inspection on request for a period of four years following the date of the relevant meeting Accordingly this list does not include documents containing exempt or confidential information, or any published works Requests to inspect any background documents should be submitted to the report author.

This page is intentionally left blank



Report of the City Solicitor

Report to: Inner North East Community Committee (Chapel Allerton, Moortown and Roundhay)

Report author: Gerard Watson, Principal Governance Officer, 0113 37 88664

Date: Monday 1 March 2021

For decision

Dates, Times and Venues of Community Committee Meetings 2021/2022

Purpose of report

1. The purpose of this report is to request Members to give consideration to agreeing the proposed Community Committee meeting schedule for the 2021/2022 municipal year.

Main issues

Meeting Schedule

2. The Procedure Rules state that there shall be at least four ordinary or 'business' meetings of each Community Committee in each municipal year and that a schedule of meetings will be approved by each Community Committee.
3. This report seeks to schedule 4 Community Committee business meetings for 2021/22, in line with previous practice. The proposed schedule has been compiled with a view to ensuring an even spread of Committee meetings throughout the forthcoming municipal year.
4. Members are also asked to note that the schedule does not set out any Community Committee themed workshops, as these can be determined by the Committee throughout the municipal year, should Members feel appropriate.

5. The following provisional dates have been agreed in consultation with the Localities team. As referenced earlier, this report seeks to schedule 4 Community Committee business meetings for 2021/22, in line with previous practice.
6. For this municipal year, efforts have been made to try and avoid scheduling multiple Community Committee meetings on the same day, in order to allow for attending officers to be present at as many Committees as possible when taking reports to all 10 Committees during a cycle. Also taken into consideration this year are the practicalities around the webcasting of meetings, and the fact that we can only webcast a maximum of 2 meetings simultaneously.
7. In terms of the format of the Community Committee meetings, as Members will be aware, over the course of 2020/21 in response to the pandemic and the restrictions in place, Community Committees initially met remotely on a consultative basis, and then remotely on a formal, decision making basis. Regarding how formal Community Committees, and other committees will meet moving forward, this is a matter which will continue to be monitored in light of how the pandemic develops and the local and national restrictions / legislation in place at the time. This will also include consideration being given to any changes made by Government to the current regulations which enable formal, decision making meetings of the Local Authority to take place remotely.
8. The proposed meeting schedule for 2021/22 is as follows:
 - Monday 14 June 2021 at 6 pm
 - Monday 6 September 2021 at 6 pm
 - Monday 29 November 2021 at 6 pm
 - Monday 28 February 2022 at 6 pm

Meeting Days, Times and Venues

9. Currently, the Committee meets on a Monday at 6 pm - and the proposed dates (above) reflect this pattern.
10. Meeting on set days and times has the advantage of certainty and regularity, which assists people to plan their schedules. The downside might be that it could serve to exclude certain people i.e. members of the public, for instance, who have other regular commitments on that particular day or who might prefer either a morning or afternoon meeting or a meeting immediately after normal working hours. Therefore, the Committee may wish to give consideration to meeting start times which would maximise the accessibility of the meetings for the community.

Options

11. Members are asked to consider whether they are agreeable with the proposed meeting schedule (above).

Corporate considerations

10a. Consultation and engagement

The submission of this report to the Community Committee forms part of the consultation process as it seeks the views of Elected Members with respect to the Community Committee meeting schedule.

In compiling the proposed schedule of meeting dates and times, the current Community Committee Chair and colleagues within the Localities team have been consulted.

10b. Equality and diversity / cohesion and integration

In considering the matters detailed, Members may wish to give consideration to ensuring that the Community Committee meeting arrangements are accessible to all groups within the community.

10c. Legal implications, access to information and call in

In line with Executive and Decision Making Procedure Rules, the power to Call In decisions does not extend to decisions taken by Community Committees.

Conclusion

11. The Procedure Rules require that each Community Committee will agree its schedule of meetings and that there shall be at least 4 business meetings per municipal year. With this, Members are asked to agree the arrangements for 2021/22.

Recommendations

12. Members are requested to consider the options detailed within the report and to consider and agree the Committee's meeting schedule for the 2021/22 municipal year (as detailed at paragraph 8).

Background information

- Not applicable

This page is intentionally left blank